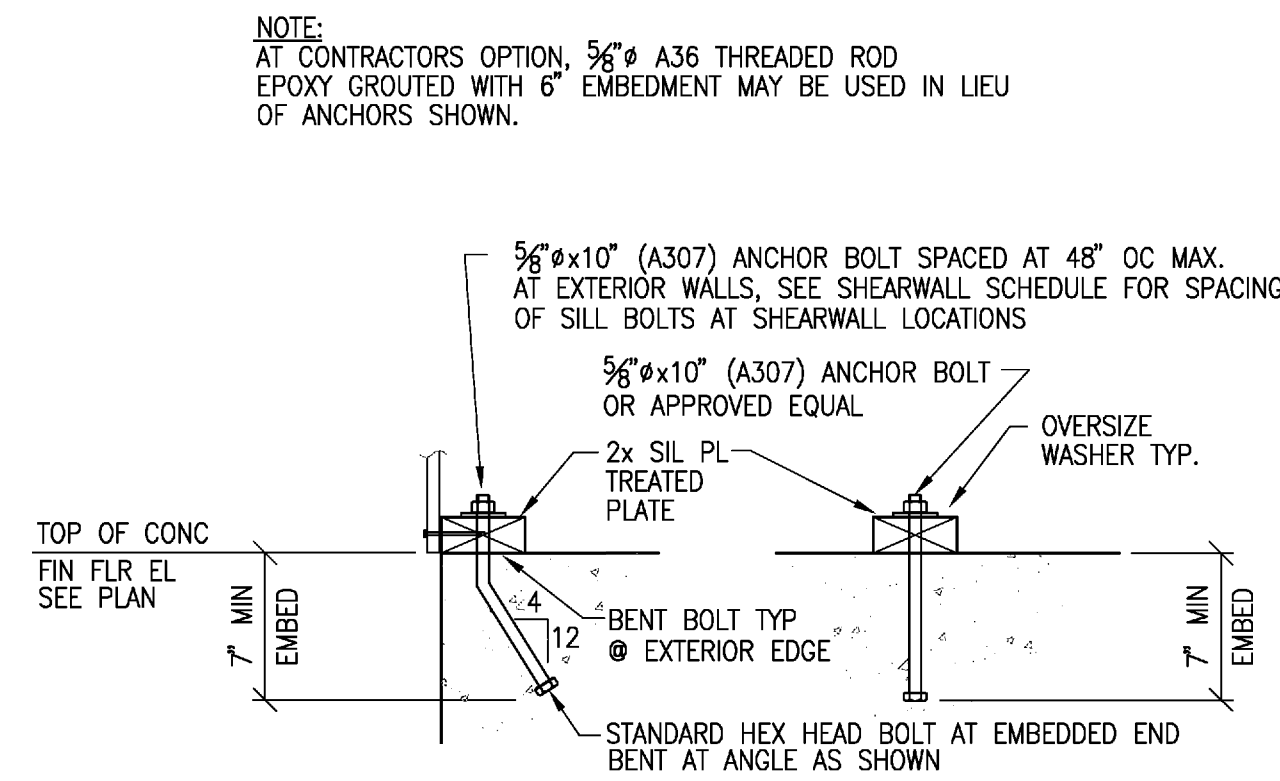


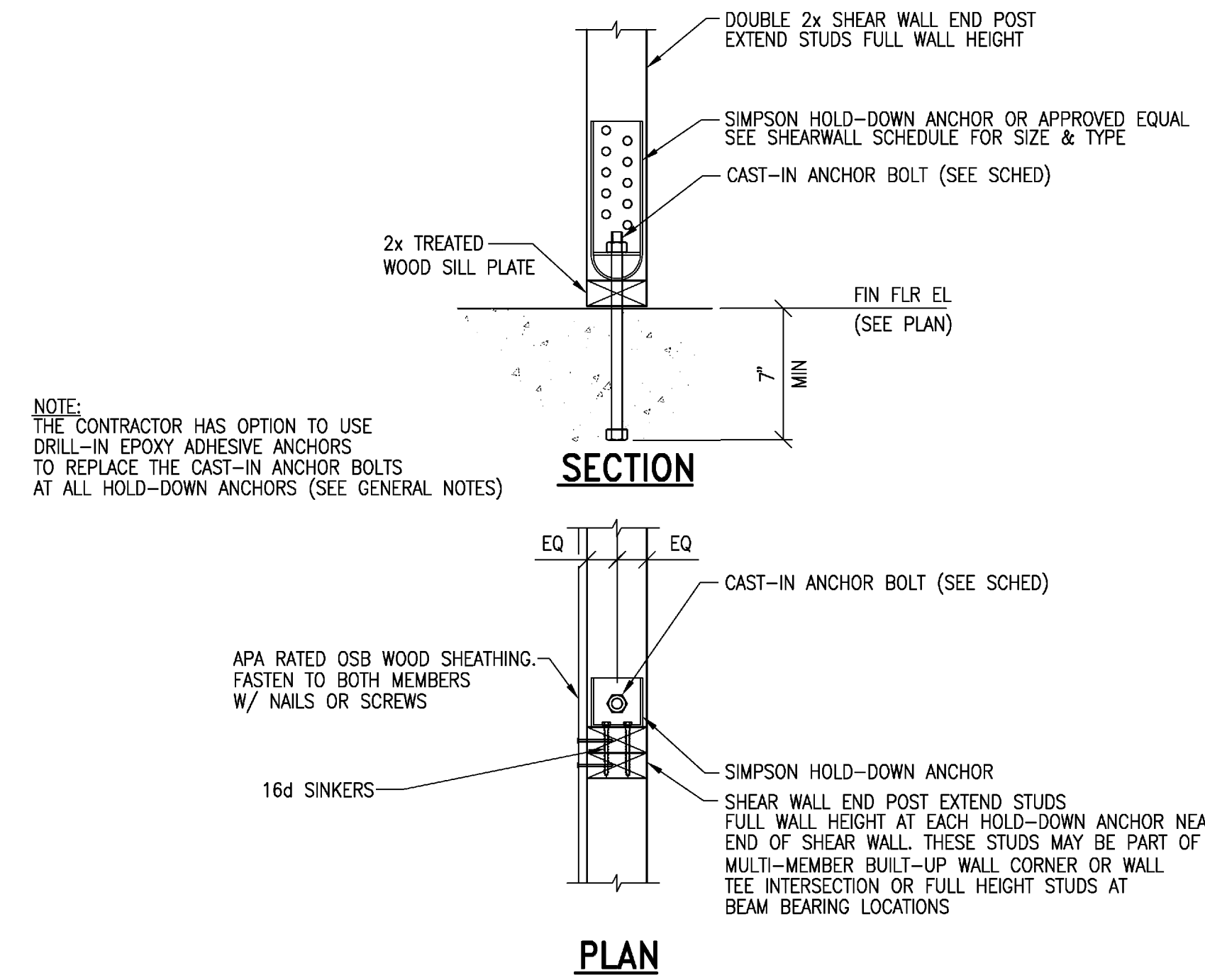
- NOTES:**
1. SAWCUT CONC SLAB AS SOON AS PROCEDURE CAN BE COMPLETED WITHOUT SPALLING OR DAMAGING EDGE. SAWCUTTING MUST BE COMPLETED WITHIN 8 HOURS OF CONCRETE PLACEMENT.
 2. 75% OF REINFORCEMENT MUST STOP 3" EACH SIDE OF JOINT.
 3. CONTRACTOR MAY PROVIDE EITHER SAW CUT CONTROL JOINT OR KEYPED CONSTRUCTION JOINT WHERE "CJ" SHOWN ON DRAWINGS.
 4. COORDINATE EXACT LOCATION OF CONTROL JOINTS WHERE ARCH DRAWINGS INDICATE CERAMIC TILE, STONE FLOORING OR TERAZZO. COORDINATE WITH ARCH.

1 DETAIL-SOG CONTROL JOINT (CJ)
N.T.S.

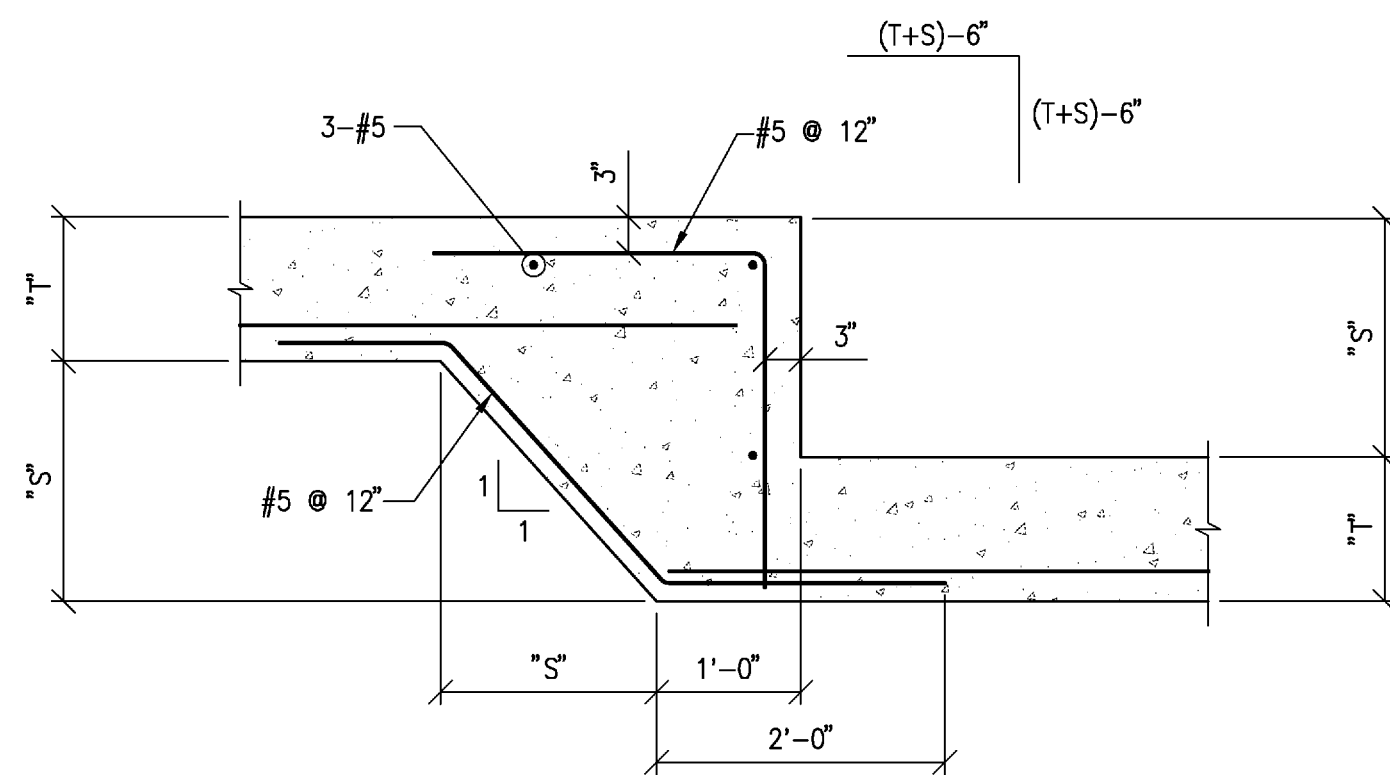


EXTERIOR WALL INTERIOR WALL

2 DETAIL-TYP SILL PLATE ANCHOR
N.T.S.

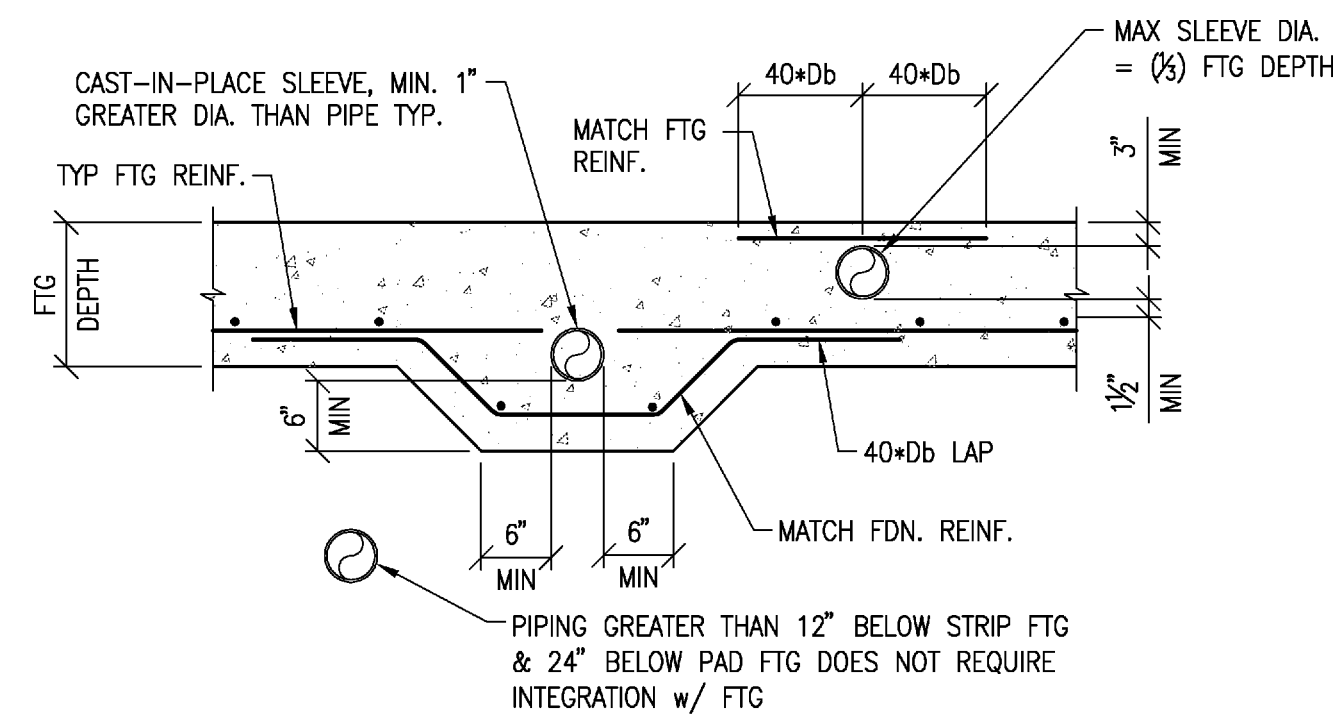


3 DETAIL-TYP SHEARWALL HOLD-DOWN ANCHOR
N.T.S.



- NOTE:**
1. CONTRACTOR SHALL COORDINATE PROPOSED FINISHED GRADE ELEVATION W/ PROPOSED TOP OF FOOTING ELEVATION TO VERIFY ADEQUATE CLEARANCE.

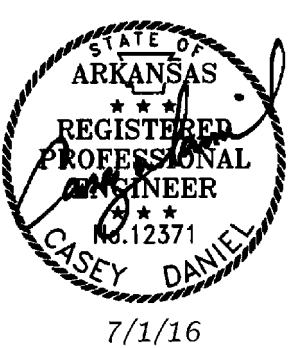
4 DETAIL-TYPICAL FOOTING STEP
N.T.S.



5 DETAIL-TYP FOOTING PIPE SLEEVE
N.T.S.

CONSULTANTS

DCI, INC.
Civil Engineer
ROBBINS ENGINEERING
Structural Engineer
TME, LLC
MEPF Engineer



7/1/16

Fire Station Renovation and
Police Station Addition
Building 7200 - Camp Joseph T. Robinson
North Little Rock, Arkansas

REVISIONS

ISSUE DATE

07-01-16

PROJECT NO.

0901U

CONTENTS

FOUNDATION DETAILS

SHEET NUMBER

S2.1

