

**Fire Station Renovation and
Police Station Addition**
Building 7200 - Camp Joseph T. Robinson
North Little Rock, Arkansas

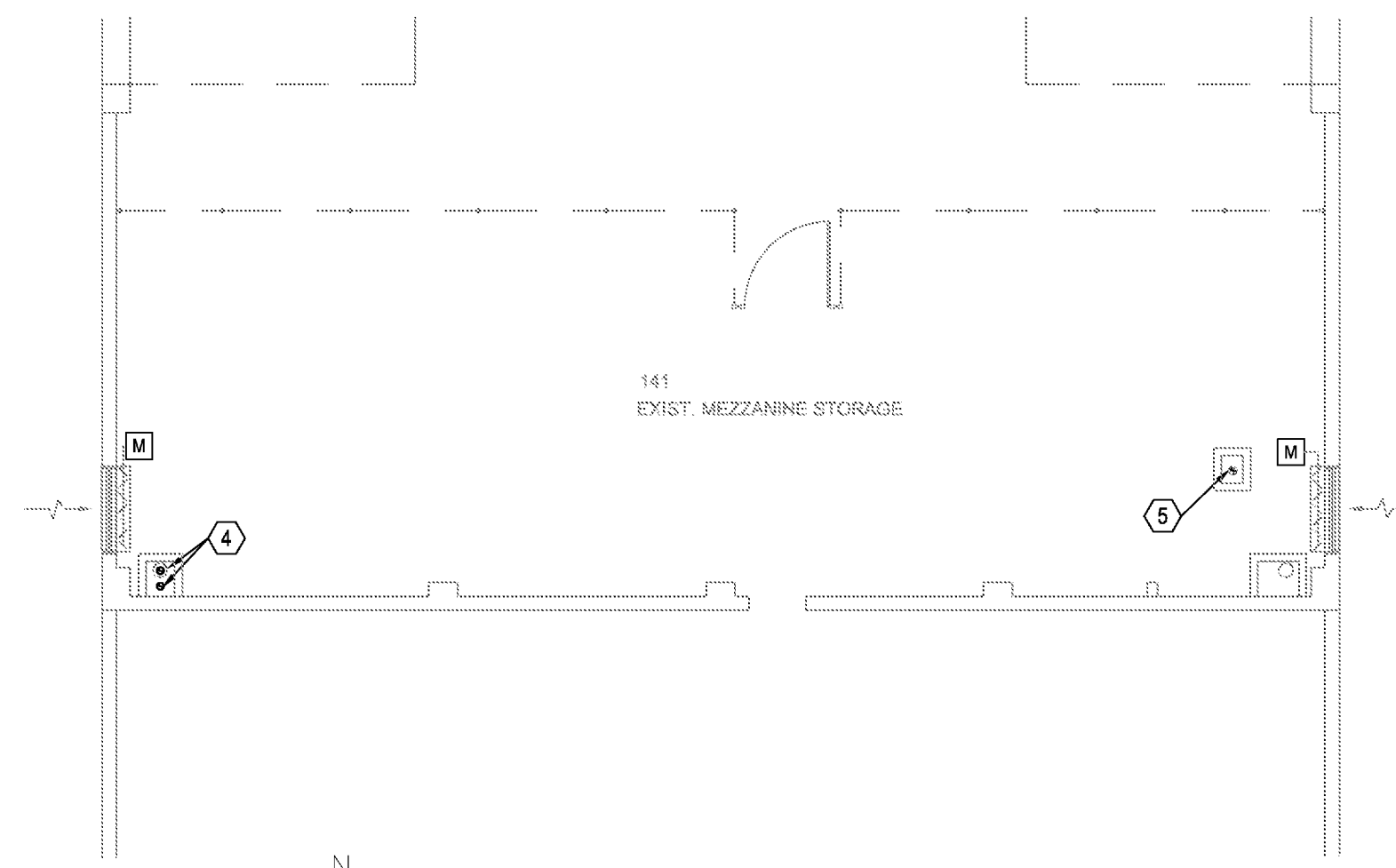
REVISIONS

ISSUE DATE
07/01/2016
PROJECT NO.
0901U

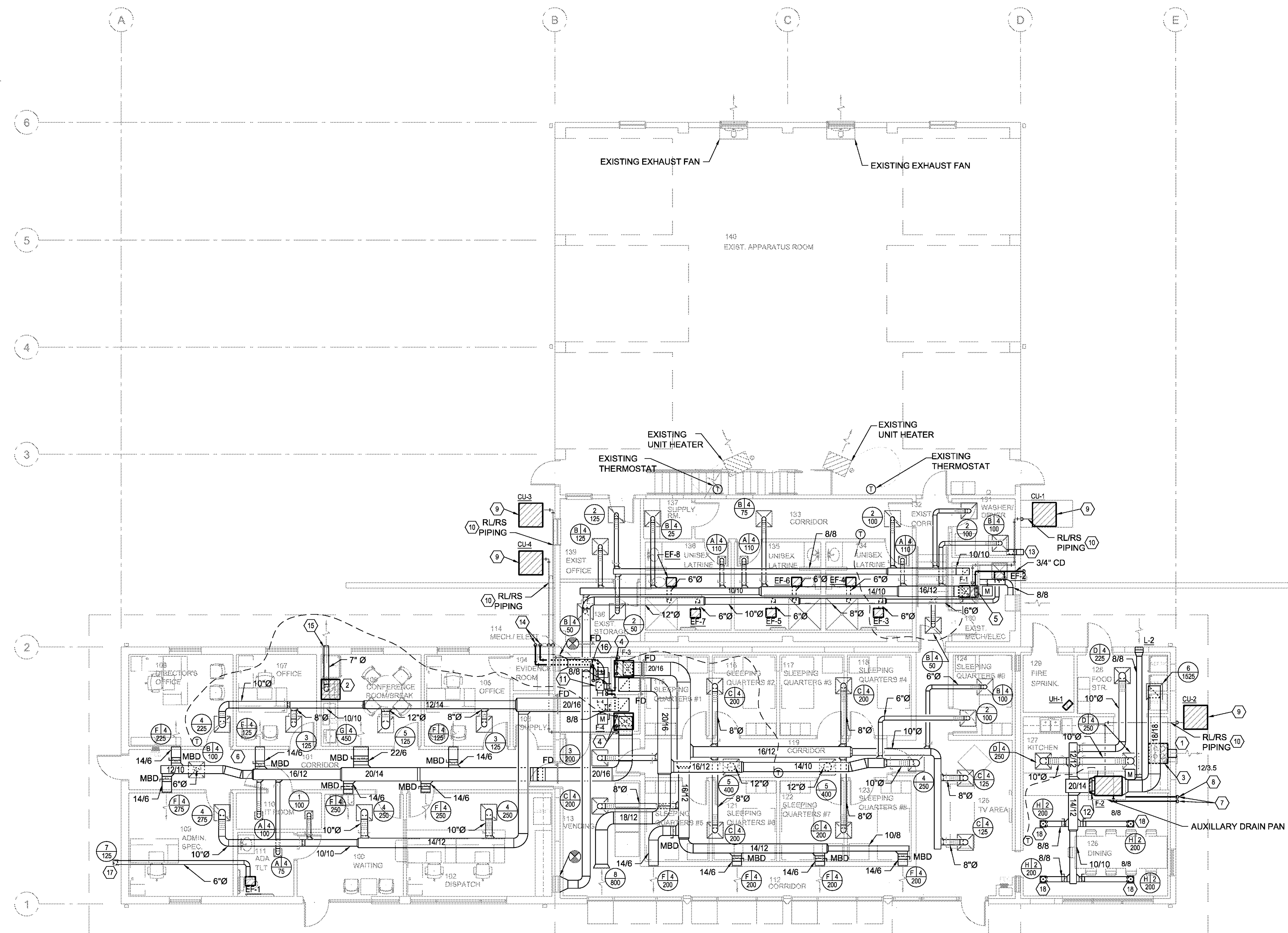
CONTENTS
FLOOR PLAN -
HVAC

SHEET NUMBER

M2.0



2 MEZZANINE PLAN - HVAC
1/8" = 1'-0"



KEYED NOTES:

- 1 PROVIDE WALL CAP EQUAL TO ARTIS METALS RP 312SBL. LOCATE TO PROVIDE MINIMUM 3" SEPARATION FROM OPERABLE WINDOWS.
- 2 PROVIDE RANGE HOOD EQUAL TO GREENHECK GRRS-30-T-G-D-N.
- 3 PROVIDE RANGE HOOD EQUAL TO GREENHECK GRRS-30-R-G-W-N.
- 4 3" COMBINATION FLUE/ COMBUSTION AIR INTAKE. ROUTE TO EXISTING ROOF VENT PENETRATION. REFER TO MEZZANINE PLAN FOR CONTINUATION. SEE SHEET M3-1 FOR DETAIL AND OTHER FURNACE UNIT INSTALLATION INSTRUCTIONS.
- 5 2" COMBINATION FLUE/ COMBUSTION AIR INTAKE. ROUTE TO EXISTING ROOF VENT PENETRATION. REFER TO MEZZANINE PLAN FOR CONTINUATION. SEE SHEET M3-1 FOR DETAIL AND OTHER FURNACE UNIT INSTALLATION INSTRUCTIONS.
- 6 8"Ø EXHAUST DUCT UP TO ROOF
- 7 3/4" CONDENSATE DRAIN PIPE. DRAIN TO GRADE.
- 8 EMERGENCY OVERFLOW DRAIN. LABEL "EMERGENCY DRAIN".
- 9 NEW CONDENSING UNIT ON NEW CONCRETE PAD. PROVIDE UV TREATMENT ON REFRIGERANT PIPING INSULATION.
- 10 REFRIGERANT SUCTION AND REFRIGERANT LIQUID PIPING FROM CONDENSING UNIT TO FURNACE UNIT EVAPORATOR COIL. SIZE ALL REFRIGERANT PIPING IN STRICT ACCORDANCE WITH MANUFACTURER'S RECOMMENDATIONS WITH REGARD TO TONNAGE AND LENGTH OF RUN.
- 11 12"Ø OSA DUCT UP THRU CONCRETE DECK. CONNECT TO EXISTING LOUVER.
- 12 3" COMBINATION FLUE/ COMBUSTION AIR INTAKE. SEE SHEET M3-1 FOR DETAIL AND OTHER FURNACE UNIT INSTALLATION INSTRUCTIONS.
- 13 8" DRYER EXHAUST DUCT TO OUTSIDE. PROVIDE WALL CAP EQUAL TO ARTIS METALS DWV8. SEE SHEET M3-1 FOR DRYER EXHAUST DETAIL.
- 14 3/4" CONDENSATE DRAIN PIPE. DRAIN TO GRADE. SEE SHEET M3-1 FOR FURNACE CONDENSATE DRAIN PAN DETAIL. PROVIDE WITH CONDENSATE PUMP EQUAL TO LITTLE GIANT 554425.
- 15 WALL MOUNT FAN BOX PROVIDED BY HOOD MANUFACTURER.
- 16 12"Ø EXHAUST DUCT UP THRU CONCRETE DECK. CONNECT TO EXISTING LOUVER.
- 17 MOUNT ALUMINUM RETURN GRILLE ALONG UNDERSIDE OF EXTERIOR SOFFIT.
- 18 MOUNT SUPPLY GRILLE TO BOTTOM OF EXISTING T-STRUCTURE.

POLICE STATION ADDITION FIRE STATION RENOVATION

1 FLOOR PLAN - HVAC
1/8" = 1'-0"