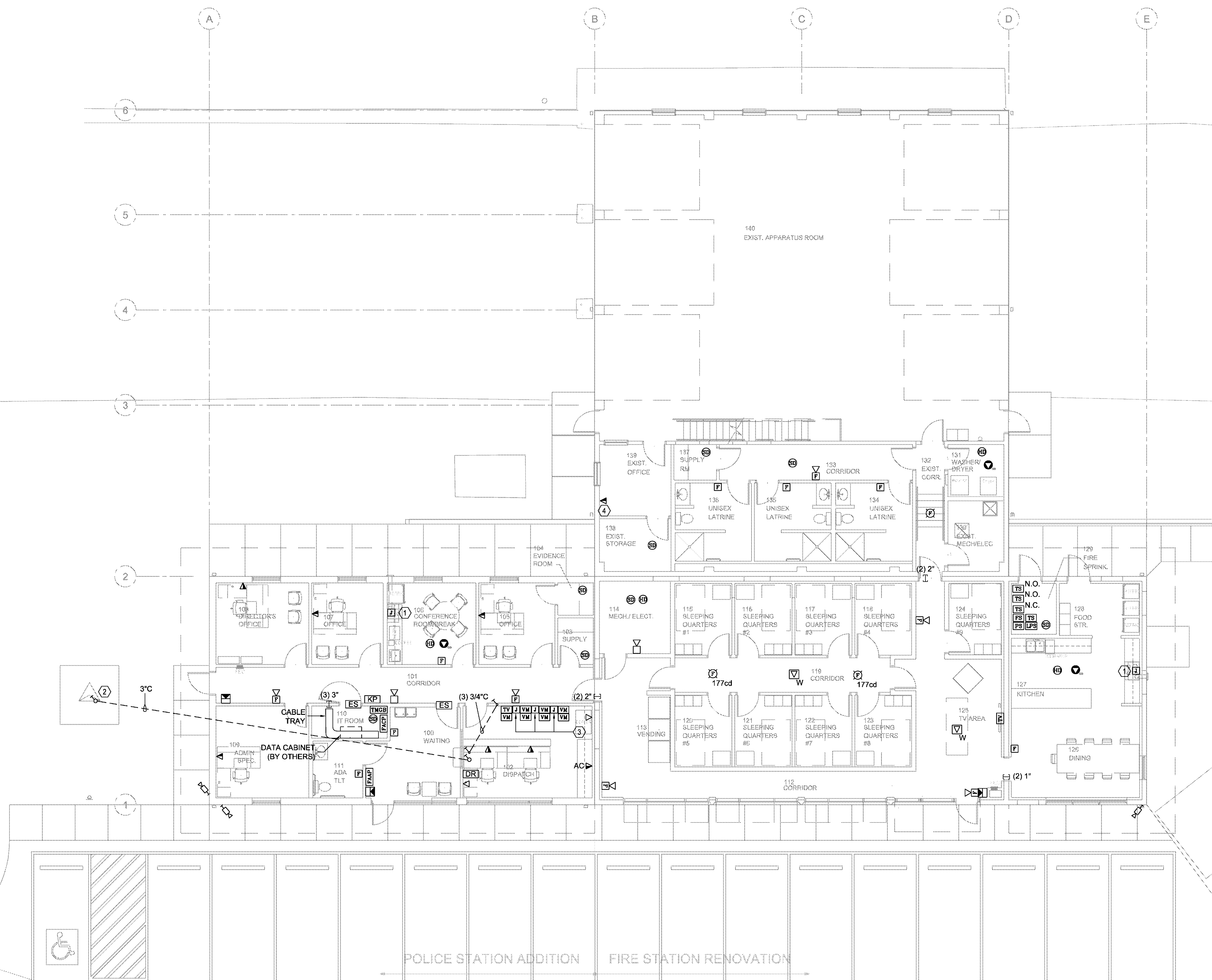


KEYED NOTES:

- ① EXHAUST HOOD: CONNECT FIRE ALARM WIRING TO EXHAUST HOOD FIRE ALARM CONNECTIONS. REFER TO MANUFACTURER'S INSTRUCTIONS FOR WIRING METHODS.
- ② ROUTE (1) 3" SCHEDULE 40 CONDUIT FROM IT ROOM TO COMMUNICATIONS TOWER. STUB-UP CONDUIT AT TOWER BASE. COORDINATE CONDUIT INSTALLATION DETAILS AT TOWER WITH COMMUNICATIONS VENDOR. ANTENNAS AND ANTENNA CABLING BY COMMUNICATIONS VENDOR. REFER TO "COMMUNICATION TOWER" DETAIL ON SHEET E0.1.
- ③ J-BOX WITH SINGLE-GANG MUD RING INSTALLED IN WALL: FOR ANTENNA CABLING TO MONITORS. STUB-UP 3/4" CONDUIT FROM EACH J-BOX TO ABOVE ACCESSIBLE CEILING IN DISPATCH AREA. INSTALL PLASTIC BUSHING ON CONDUIT END. COORDINATE MOUNTING HEIGHTS OF J-BOX WITH ARCHITECTURAL ELEVATIONS AND OWNER PROVIDED AND INSTALLED TV AND VIDEO MONITOR MOUNTING BRACKETS.
- ④ NEW TELEPHONE AND DATA JACKS INSTALLED IN EXISTING BACKBOX (BY OTHERS).



N
① **FLOOR PLAN - SYSTEMS**
1/8" = 1'-0"

**Fire Station Renovation and
Police Station Addition**
Building 7200 - Camp Joseph T. Robinson
North Little Rock, Arkansas

REVISIONS

NO.	DESCRIPTION

ISSUE DATE
07/01/2016

PROJECT NO.
0901U

CONTENTS
FLOOR PLAN -
SYSTEMS

SHEET NUMBER

E4.0