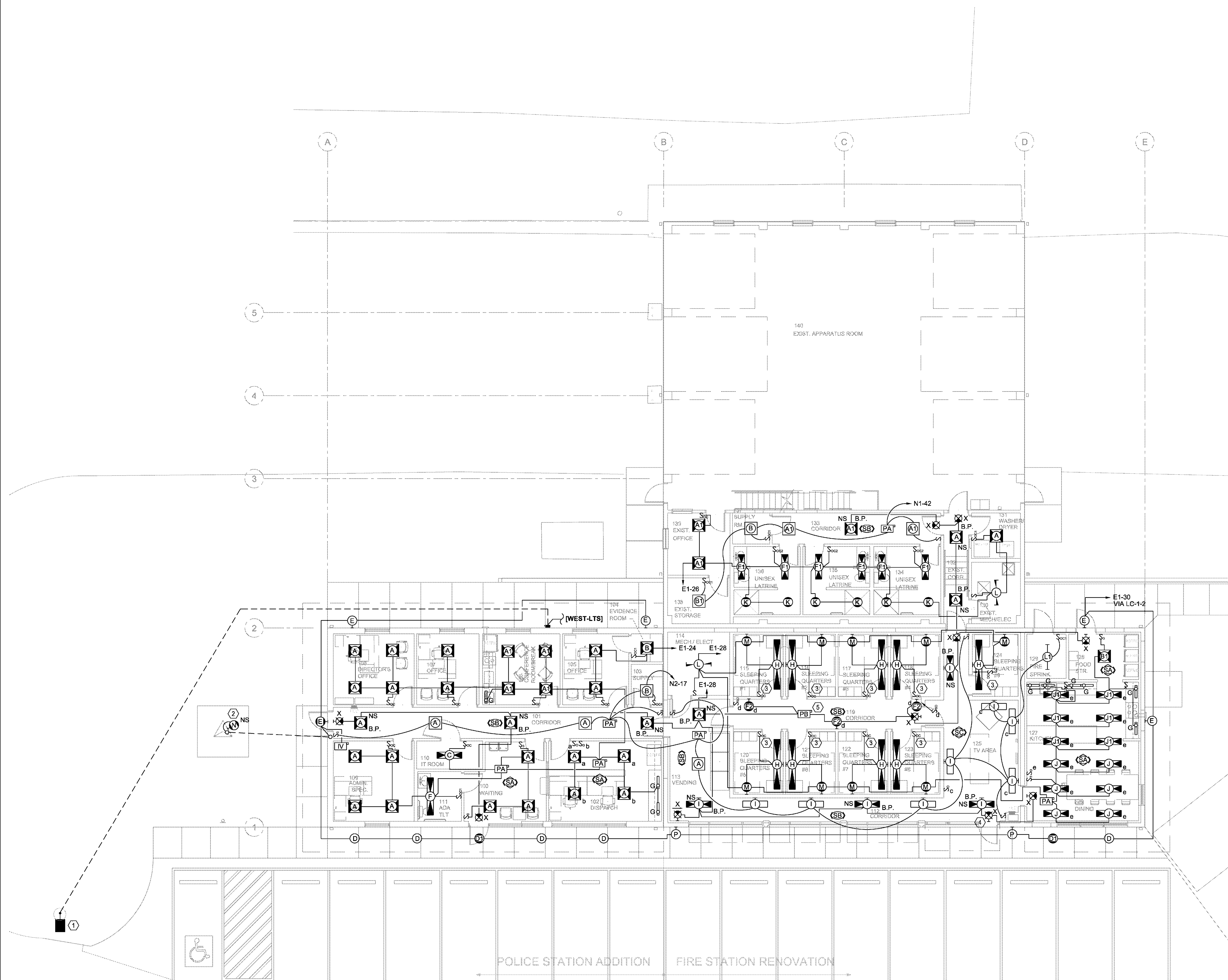


Fire Station Renovation and
Police Station Addition
Building 7200 - Camp Joseph T. Robinson
North Little Rock, Arkansas

KEYED NOTES:

- ① RELOCATED DIRECT BURIAL POLE LIGHT. INSTALL POLE AT DEPTH VERIFIED AT DEMOLITION.
- ② MOUNT RED WARNING LIGHT TO TOP OF NEW COMM TOWER. PROVIDE MOUNTING SUPPORTS AS NECESSARY FOR MOUNTING. COORDINATE INSTALLATION OF LIGHT WITH TOWER INSTALLER AND MANUFACTURER.
- ③ OCCUPANCY SENSOR SWITCHES: SET TO VACANCY MODE.
- ④ EXIT SIGN: MOUNTED TO STEEL TUBE FRAME. ROUTE CONDUIT INSIDE FRAME.
- ⑤ PROGRAM LIGHT FIXTURES IN CORRIDOR 119 TO DIM DOWN TO 5% LIGHT OUTPUT UPON VACANCY CONDITION INDICATED BY OCCUPANCY SENSOR OR WHEN THE LOW-VOLTAGE WALL SWITCHES' OFF BUTTON IS PRESSED. DIM UP TO 100% LIGHT OUTPUT UPON OCCUPANCY CONDITION INDICATED BY OCCUPANCY SENSOR OR WHEN WALL SWITCHES' ON BUTTON IS PRESSED.



1 FLOOR PLAN - LIGHTING
1/8" = 1'-0"

REVISIONS

ISSUE DATE
07/01/2016
PROJECT NO.
0901U

CONTENTS
FLOOR PLAN -
LIGHTING

SHEET NUMBER

E2.0