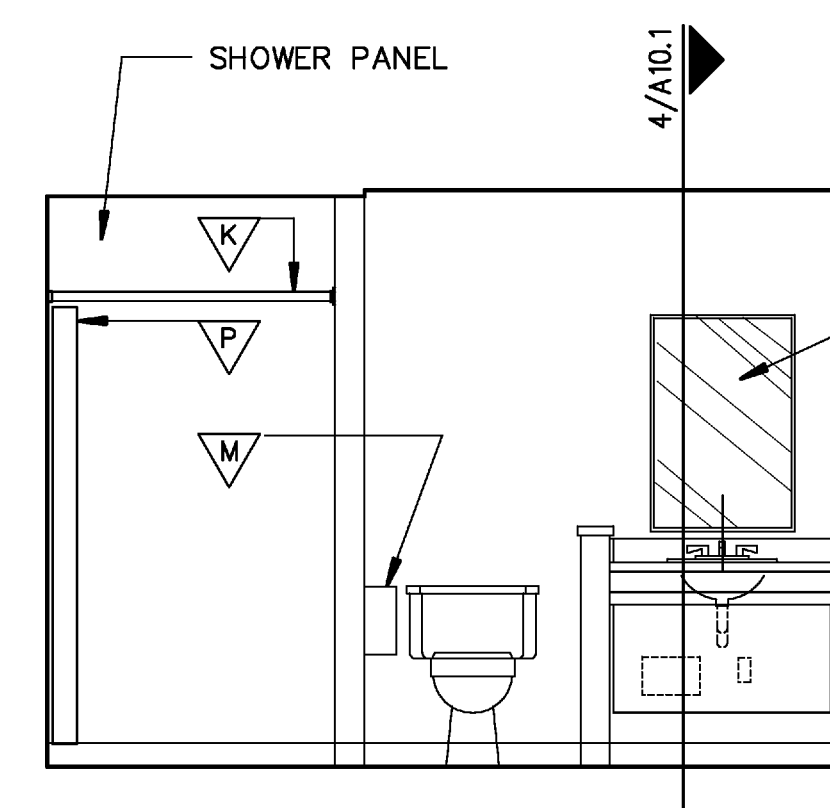
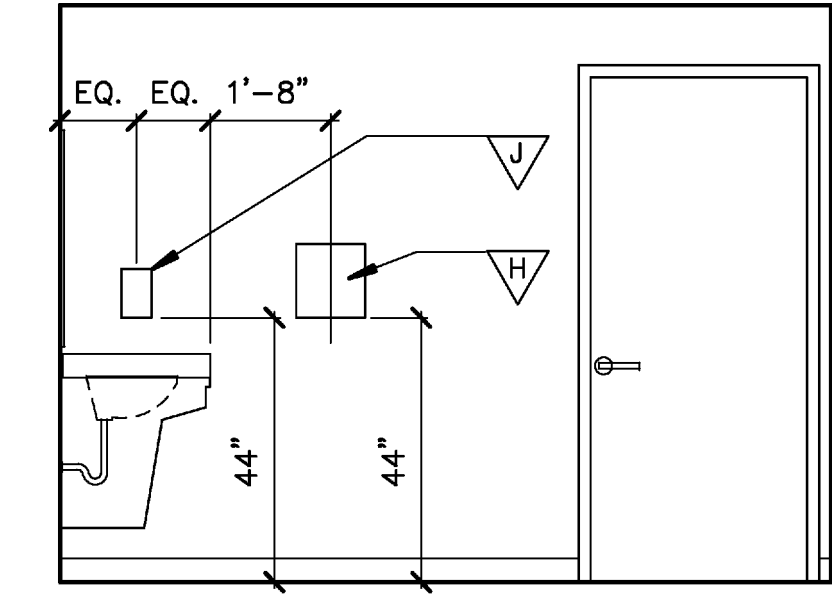


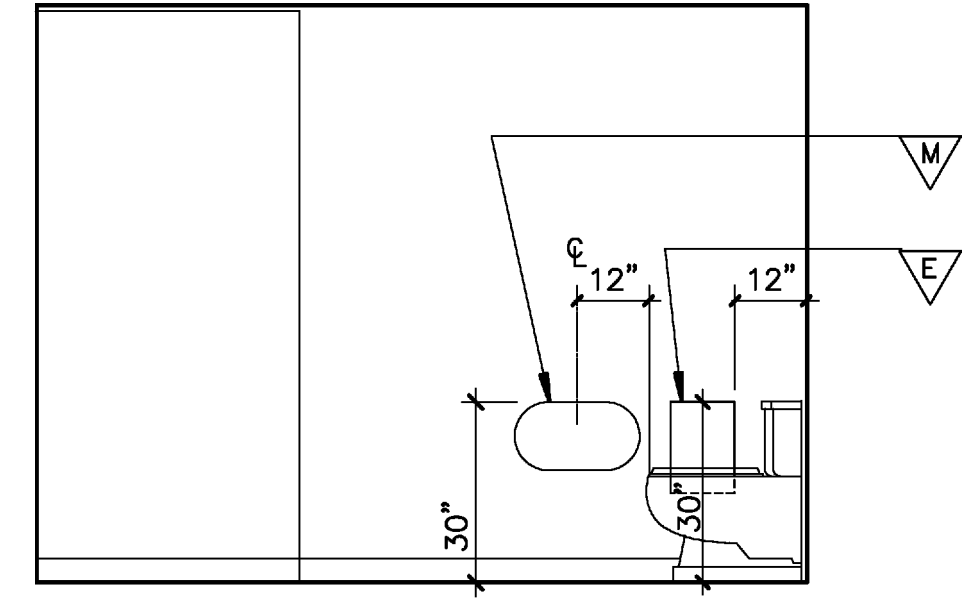
**1 INTERIOR ELEV. - TV AREA #123**  
3/8" = 1'-0"



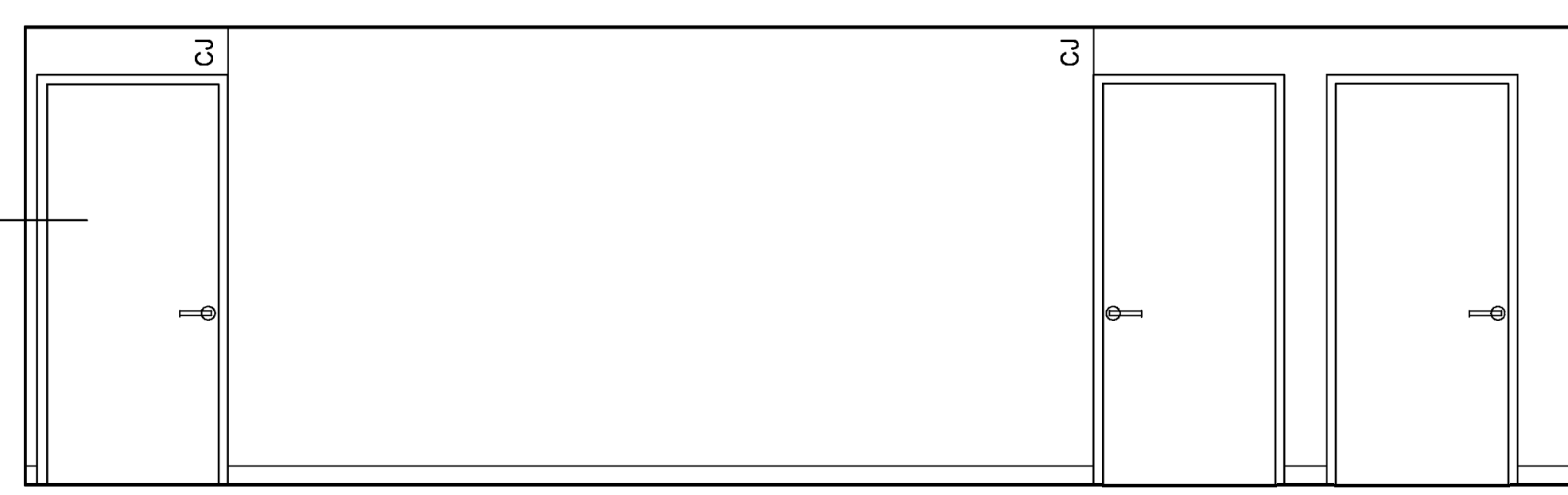
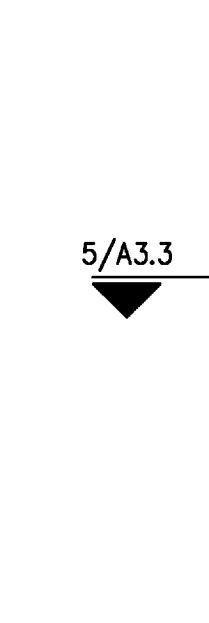
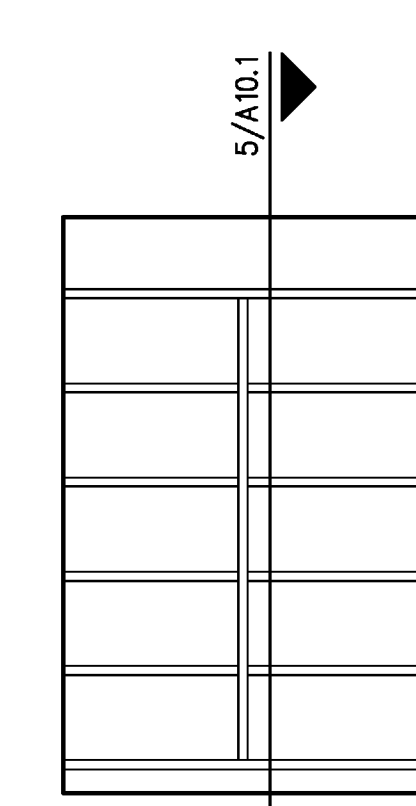
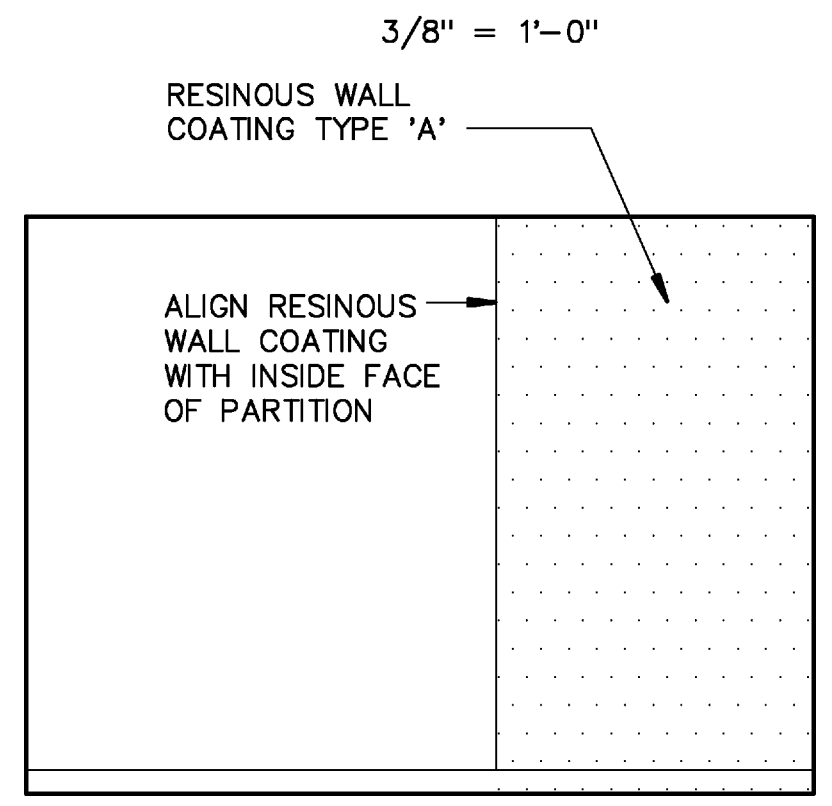
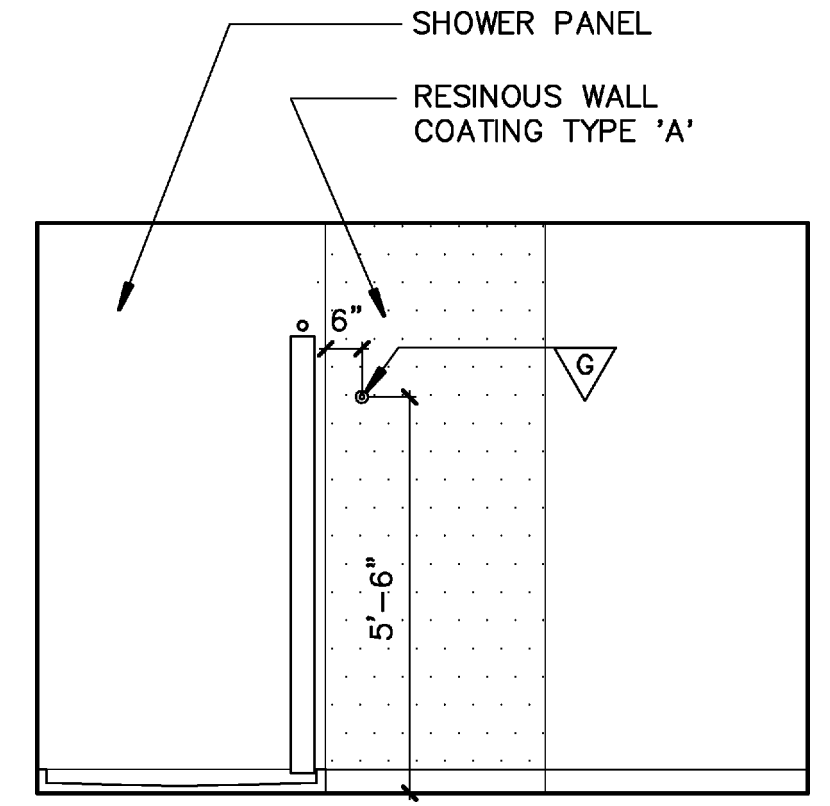
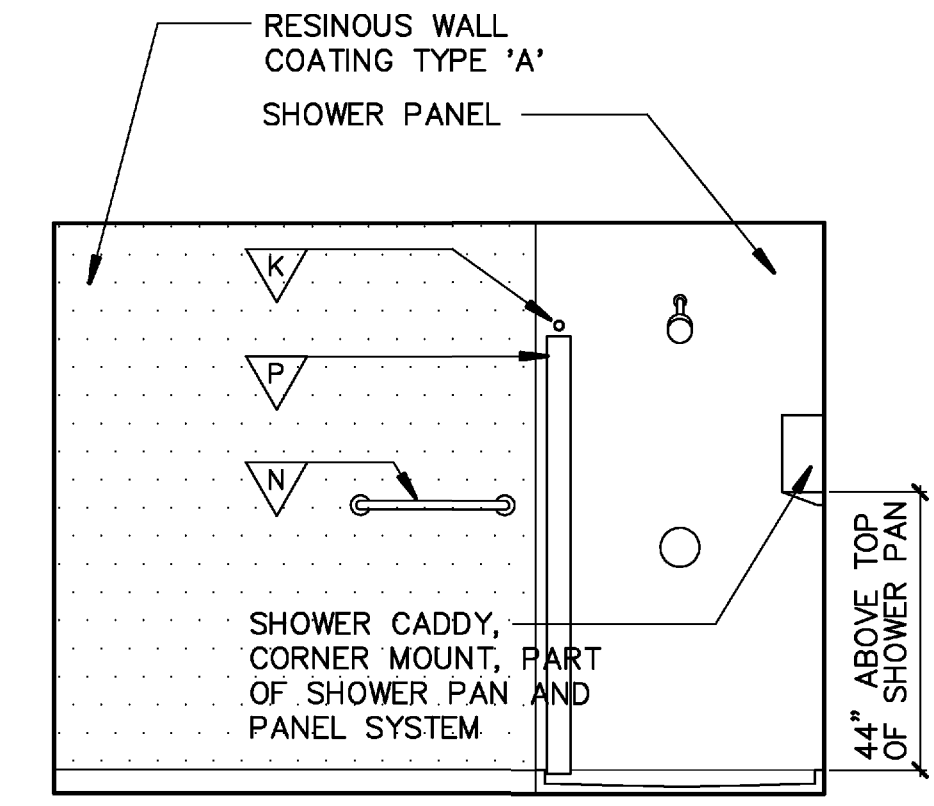
**2 INTERIOR ELEV. UNISEX LATRINE, #134, #135, #136**  
3/8" = 1'-0"



**3 INTERIOR ELEV. UNISEX LATRINE, #134, #135, #136**  
3/8" = 1'-0"



**4 INTERIOR ELEV. UNISEX LATRINE, #134, #135, #136**  
3/8" = 1'-0"



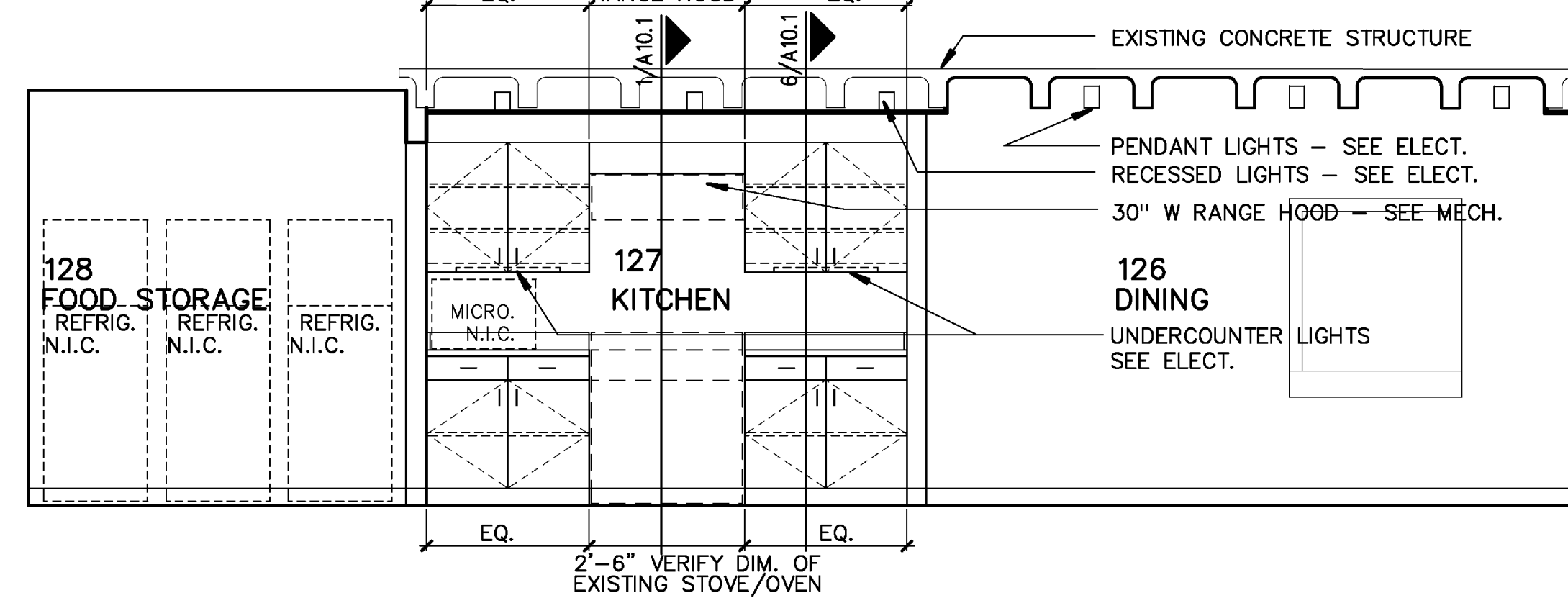
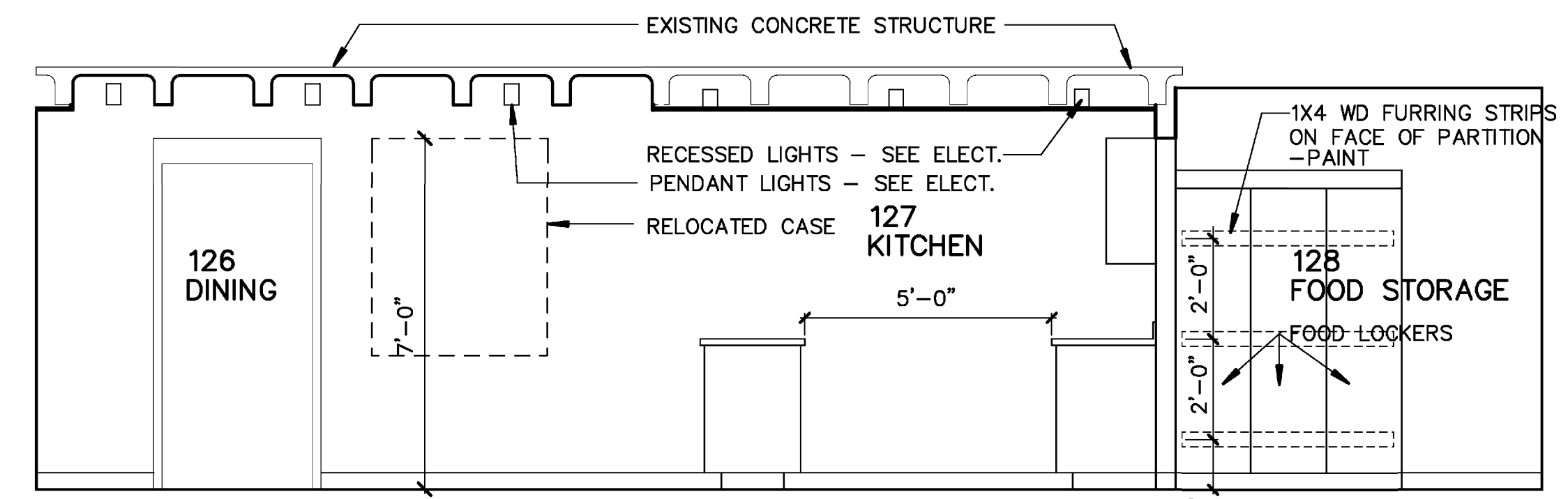
**5 INTERIOR ELEV. UNISEX LATRINE, #134, #135, #136**  
3/8" = 1'-0"

**6 INTERIOR ELEV. UNISEX LATRINE, #134, #135, #136**  
3/8" = 1'-0"

**7 INTERIOR ELEV. UNISEX LATRINE, #134, #135, #136**  
3/8" = 1'-0"

**8 INTERIOR ELEV. - STORAGE #137**  
3/8" = 1'-0"

**9 INTERIOR ELEV. - CORRIDOR #133**  
3/8" = 1'-0"

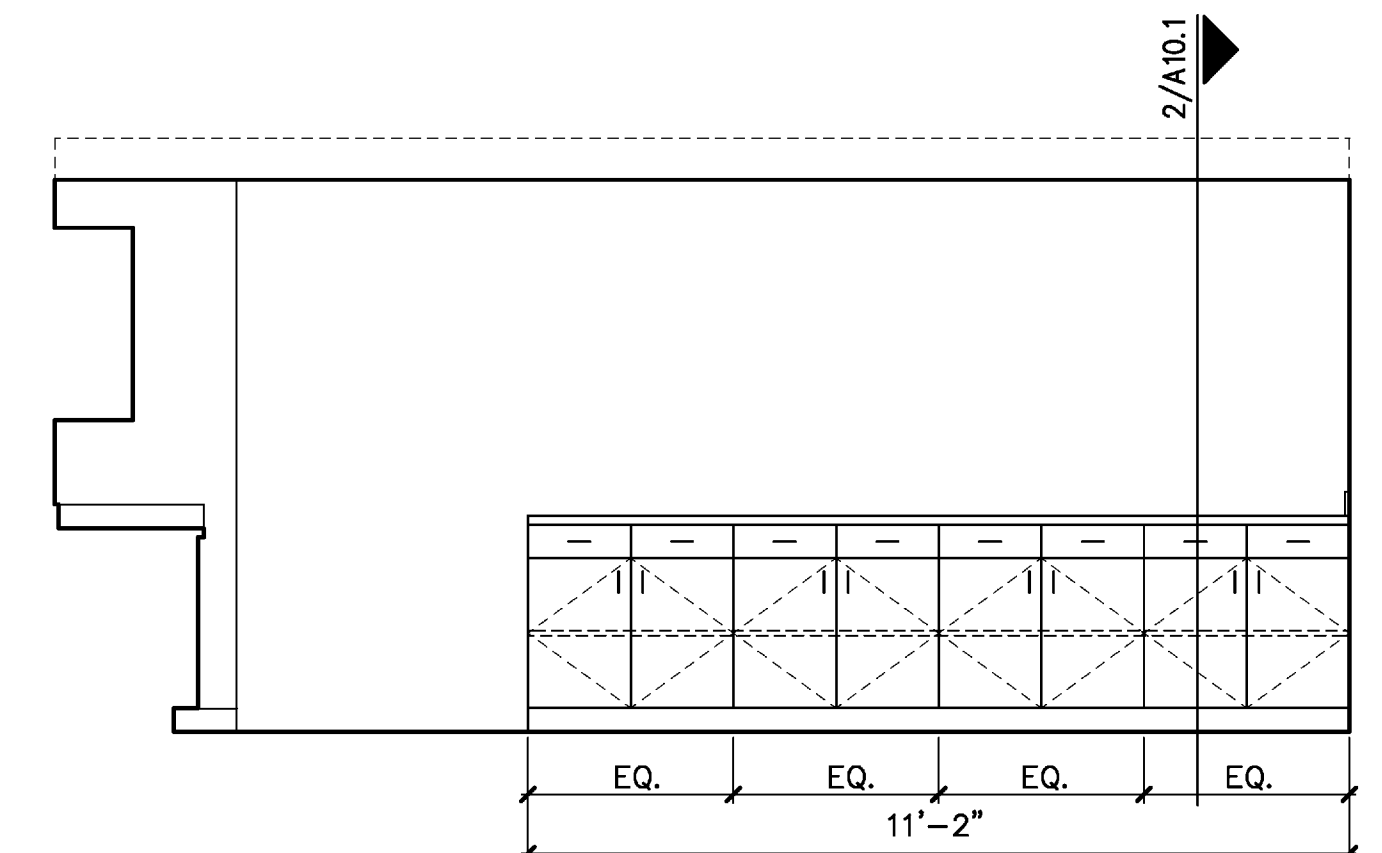


**TOILET ACCESSORIES**

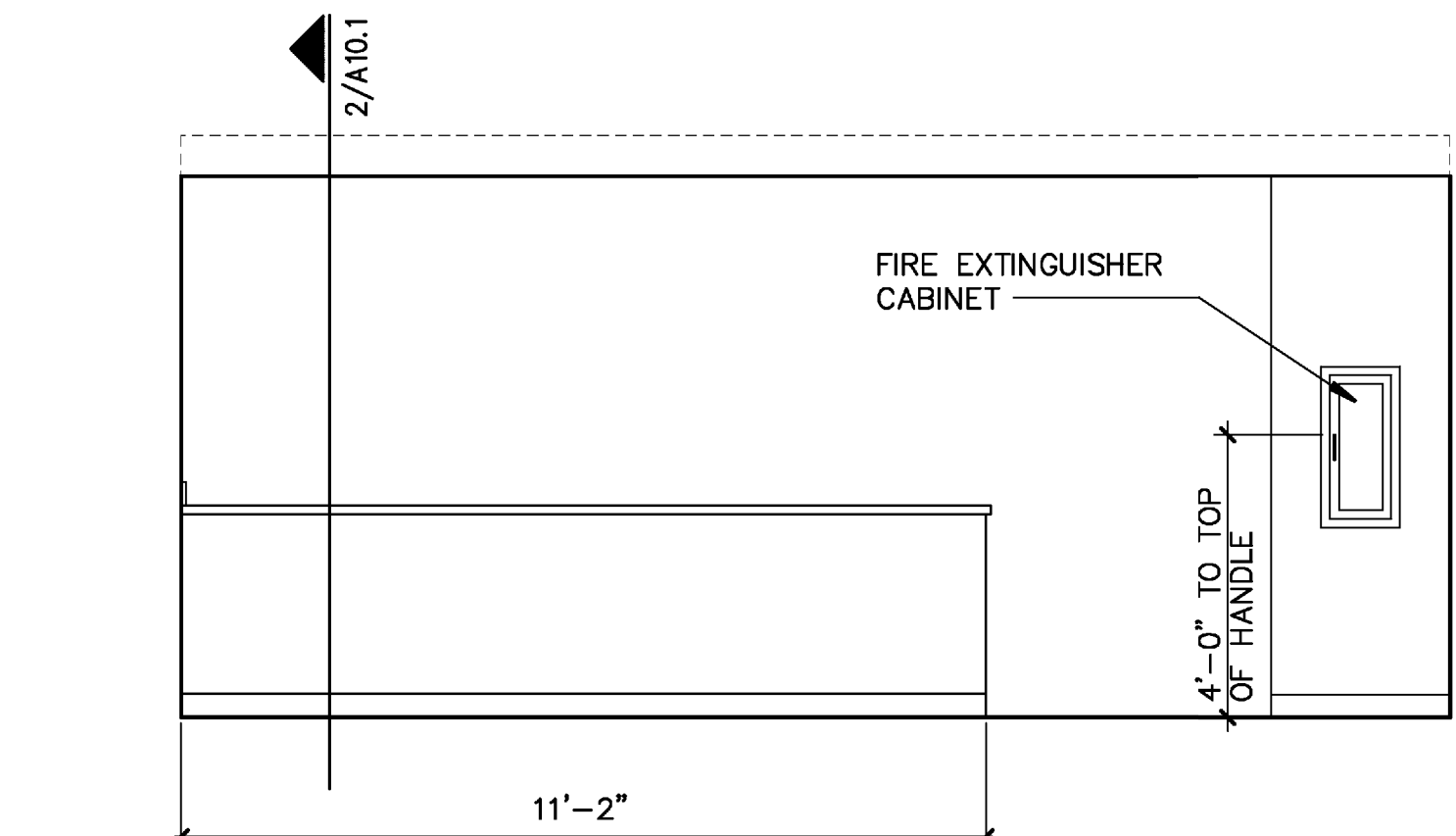
- △ A 36" GRAB BAR
- △ B 42" GRAB BAR
- △ C 18" GRAB BAR
- △ D 18" WIDE X 36" HIGH, FRAMED MIRROR
- △ E SANITARY NAPKIN DISPOSAL: SURFACE MOUNT
- △ F TOILET PAPER HOLDER (TWO ROLL): SURFACE MOUNT
- △ G COAT HOOK
- △ H HAND DRYER: SURFACE MOUNT
- △ J SOAP DISPENSER: SURFACE MOUNT
- △ K CURTAIN ROD
- △ L HAND DRYER: SURFACE MOUNT WITH RECESS KIT
- △ M BULK TOILET PAPER HOLDER: SURFACE MOUNT
- △ N 24" TOWEL BAR
- △ P SHOWER CURTAIN and CURTAIN HOOKS
- △ Q 24" WIDE X 36" HIGH FRAMED MIRROR

**10 INTERIOR ELEV. - DINING #126, KITCHEN #127, FOOD STORAGE #128**  
3/8" = 1'-0"

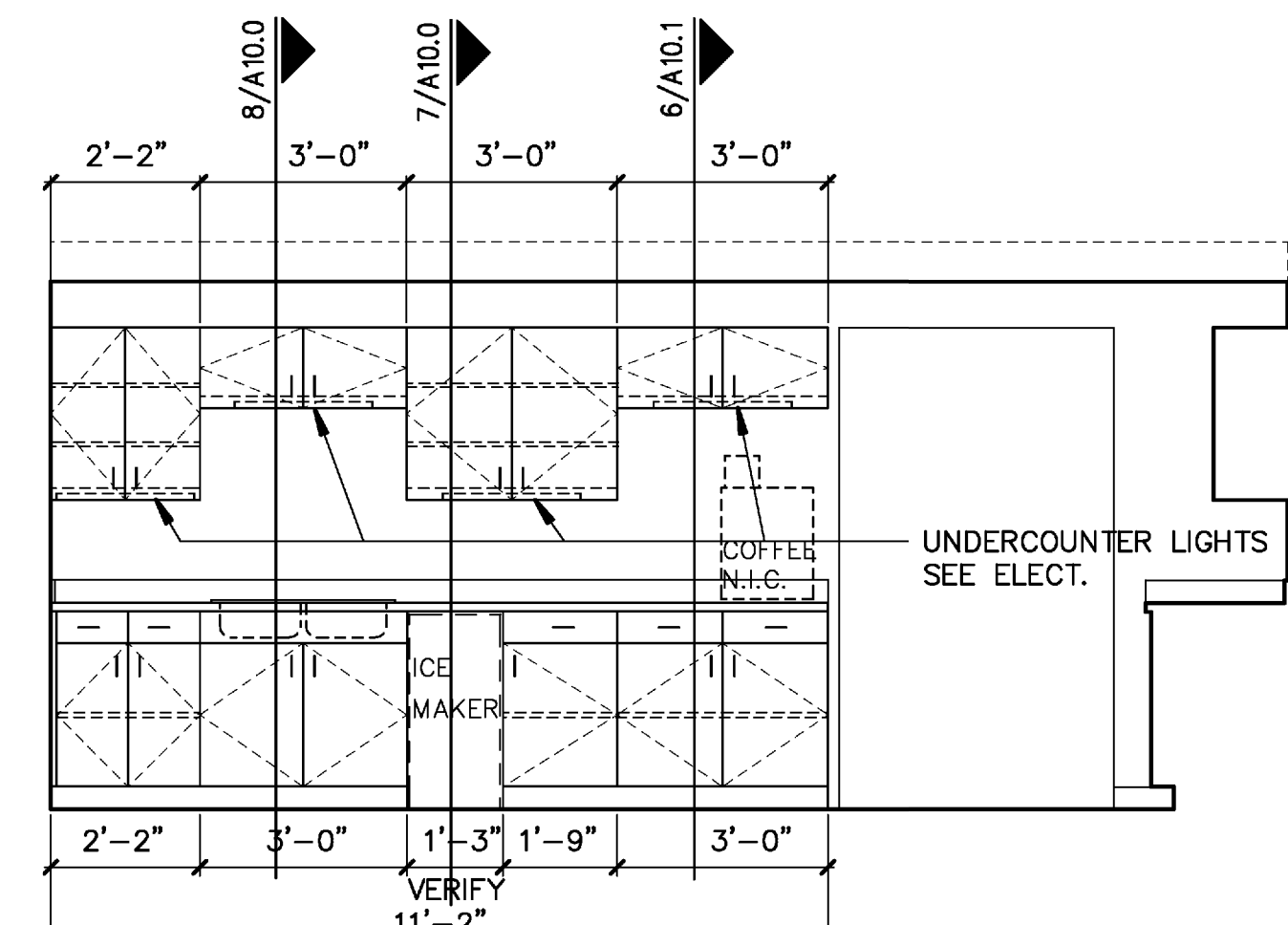
**11 INTERIOR ELEV. - FOOD STORAGE #128, KITCHEN #127, DINING #126**  
3/8" = 1'-0"



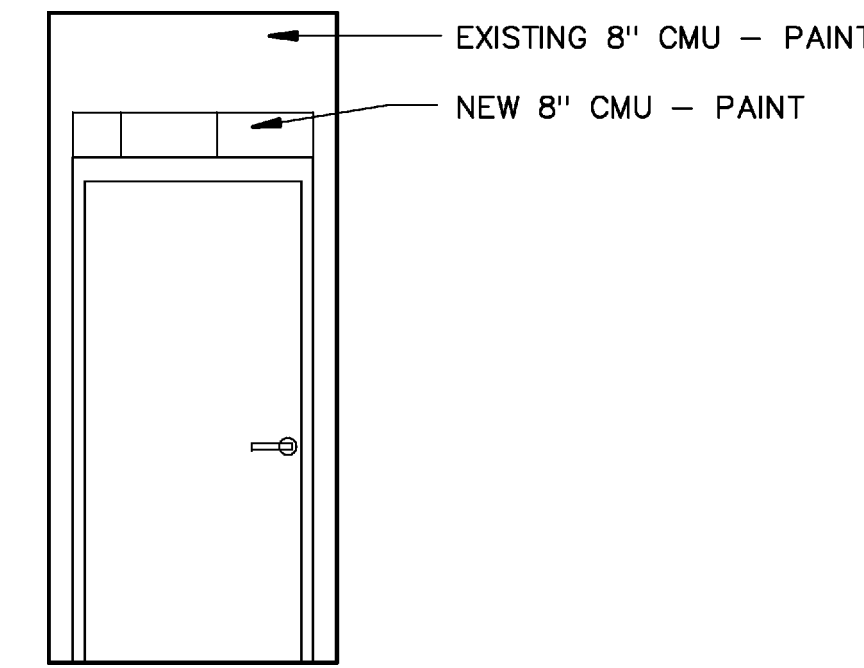
**12 INTERIOR ELEV. - KITCHEN #127**  
3/8" = 1'-0"



**13 INTERIOR ELEV. - DINING #126**  
3/8" = 1'-0"



**14 INTERIOR ELEV. - KITCHEN #127**  
3/8" = 1'-0"



**15 INTERIOR ELEV. - TV AREA #125**  
3/8" = 1'-0"

REVISIONS


ISSUE DATE  
JULY 1, 2016  
PROJECT NO.  
0901U

CONTENTS  
INTERIOR ELEVATIONS -  
FIRE STATION  
RENOVATION

SHEET NUMBER

**A9.2**