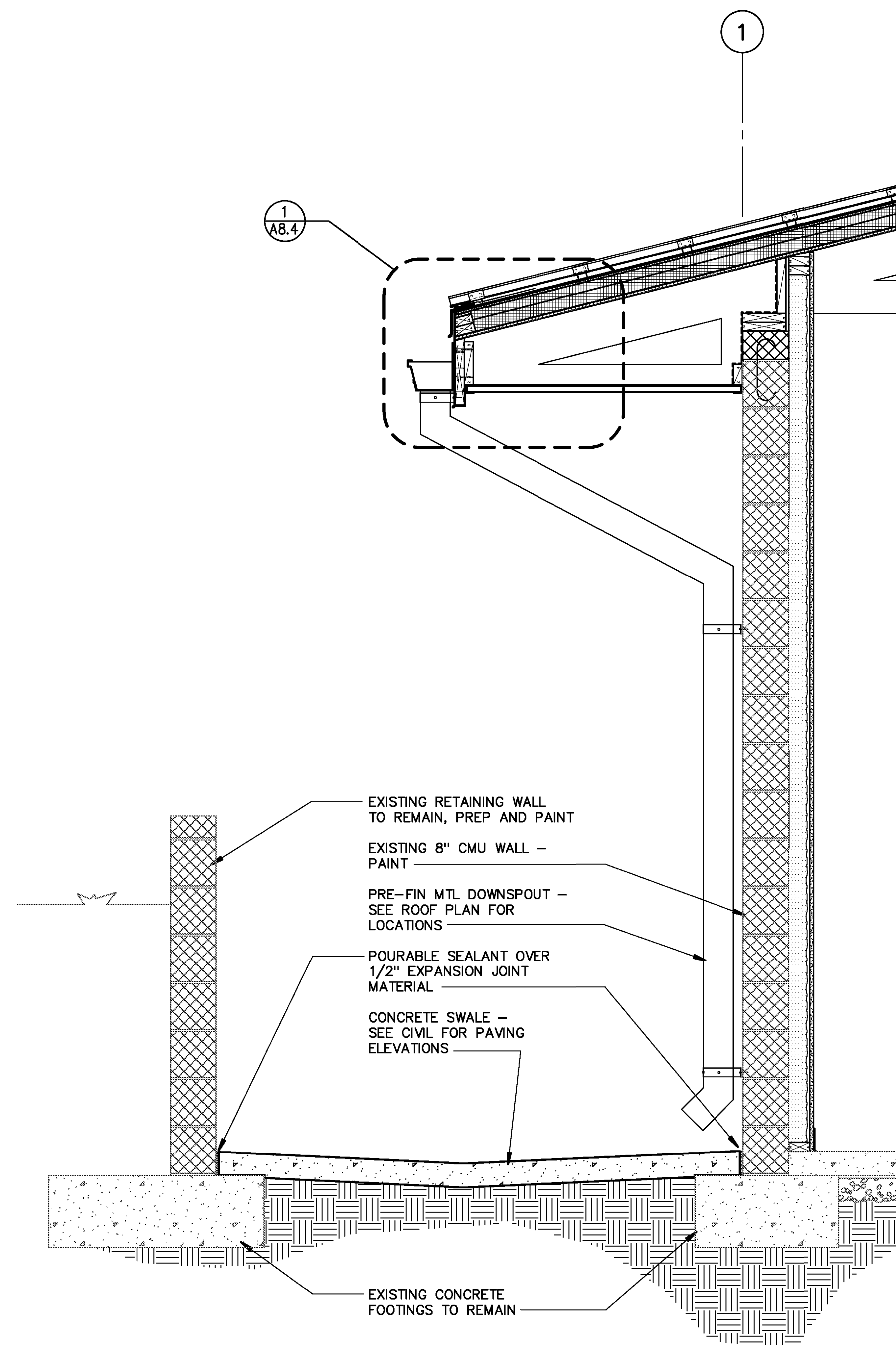


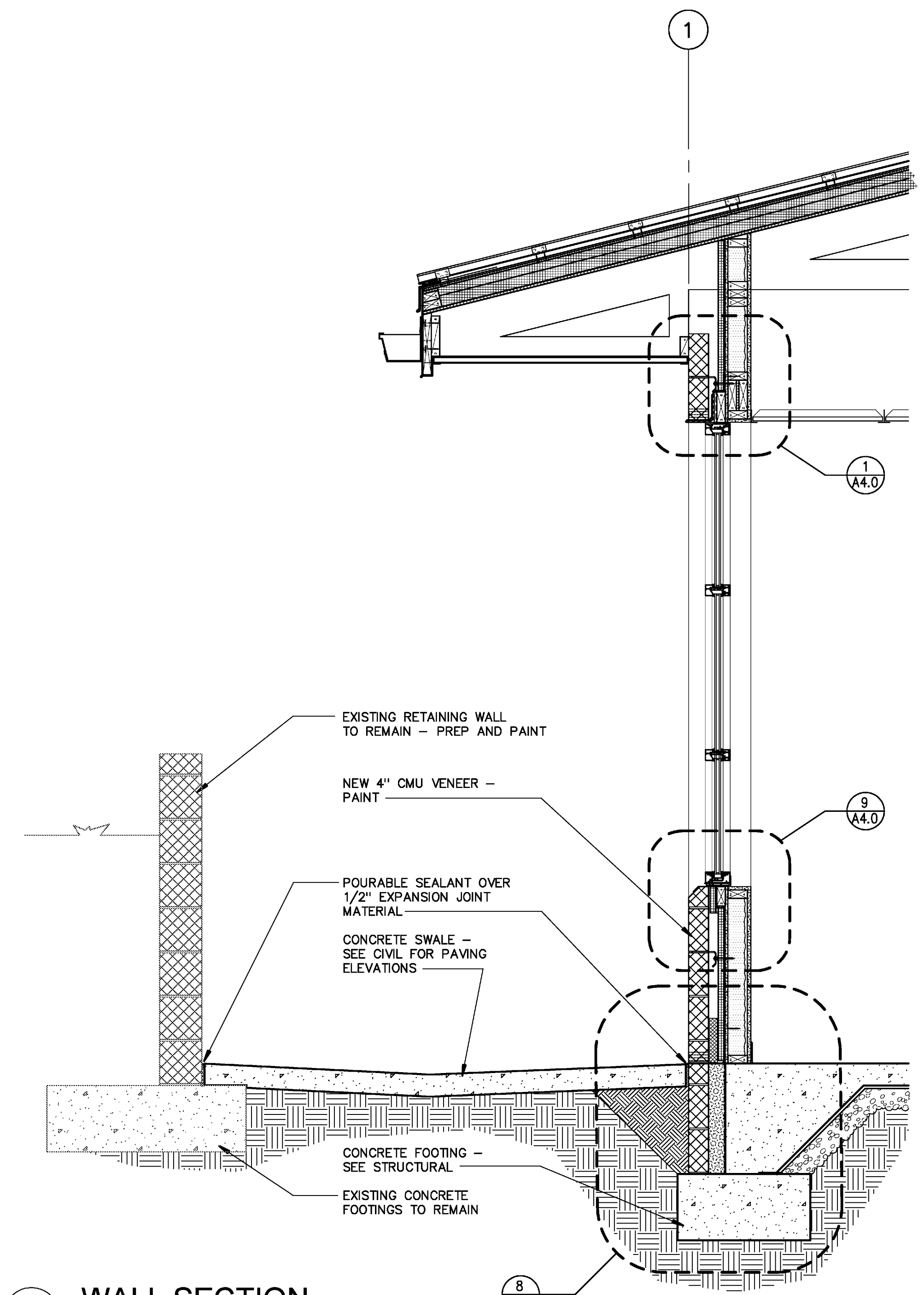
**1 WALL SECTION**  
SCALE: 3/4"=1'-0"

NOTE: SEE 1/A8.2 FOR TYPICAL WALL SECTION NOTES



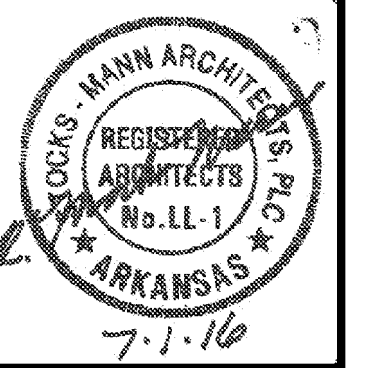
**2 WALL SECTION**  
SCALE: 3/4"=1'-0"

NOTE: SEE 1/A8.0 FOR TYPICAL WALL SECTION NOTES



**3 WALL SECTION**  
SCALE: 3/4"=1'-0"

CONSULTANTS  
DCI, Inc.  
Civil Engineer  
ROBBINS ENGINEERING  
Structural Engineer  
TME, LLC.  
MEPF Engineer



**Fire Station Renovation and Police Station Addition**  
Building 7200 - Camp Joseph T. Robinson  
North Little Rock, Arkansas

REVISIONS

NO.	DESCRIPTION

ISSUE DATE  
JULY 1, 2016  
PROJECT NO.  
0901U

CONTENTS  
WALL SECTIONS

SHEET NUMBER

**A8.3**