

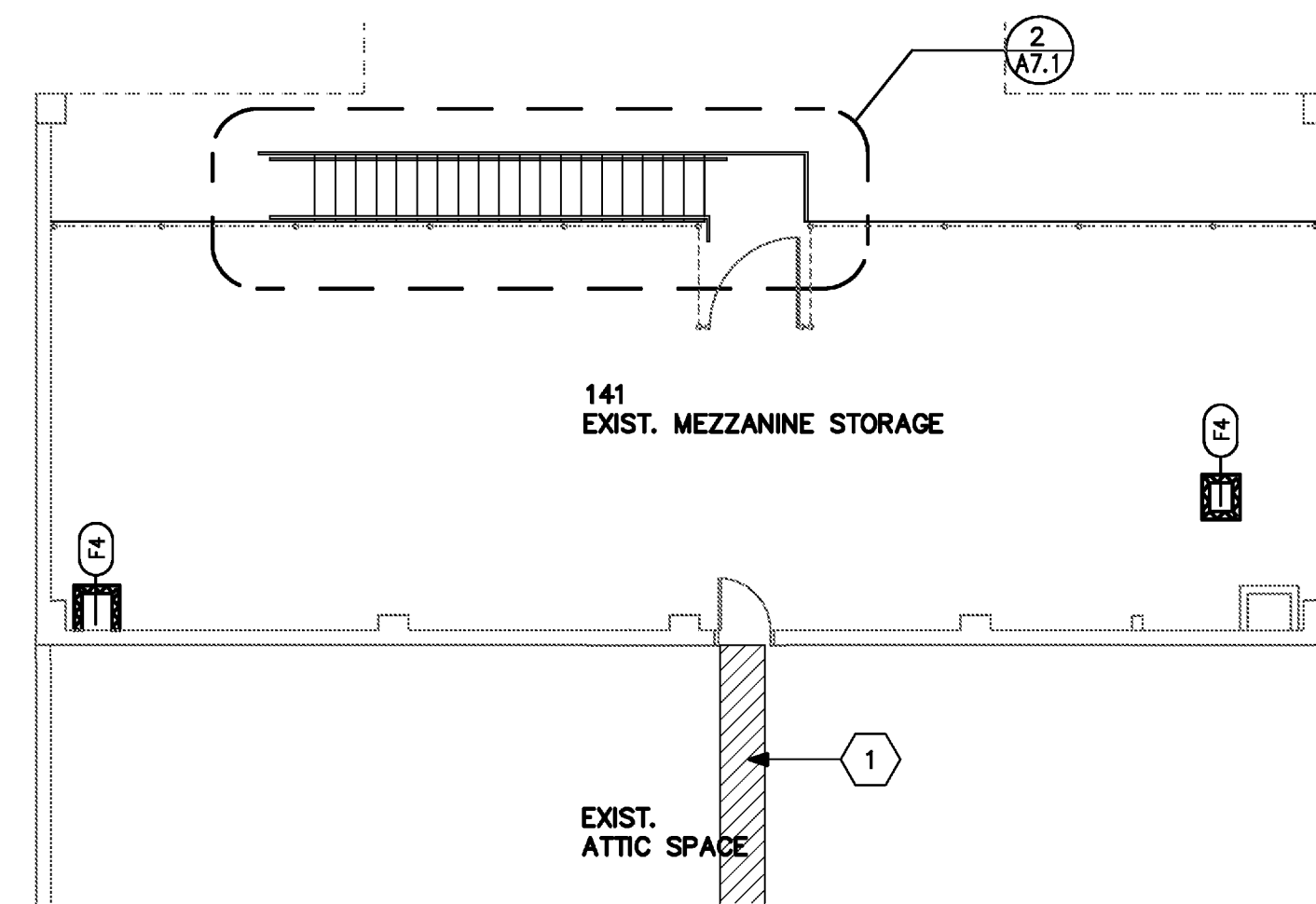
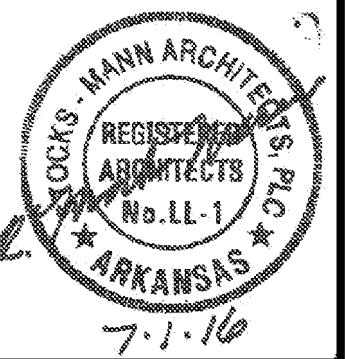
KEYNOTE LEGEND

- 1 PROVIDE A 2'-0" WIDE 3/4" PLYWOOD SUB-FLOOR OVER THE BOTTOM CHORD OF THE EXISTING TRUSSES STARTING AT THE EXISTING ATTIC ACCESS DOOR AND EXTENDING TO THE INSIDE FACE OF THE GABLE ATTIC WALL OPPOSITE THE ATTIC ACCESS DOOR AS SHOWN AT HATCHED AREA.

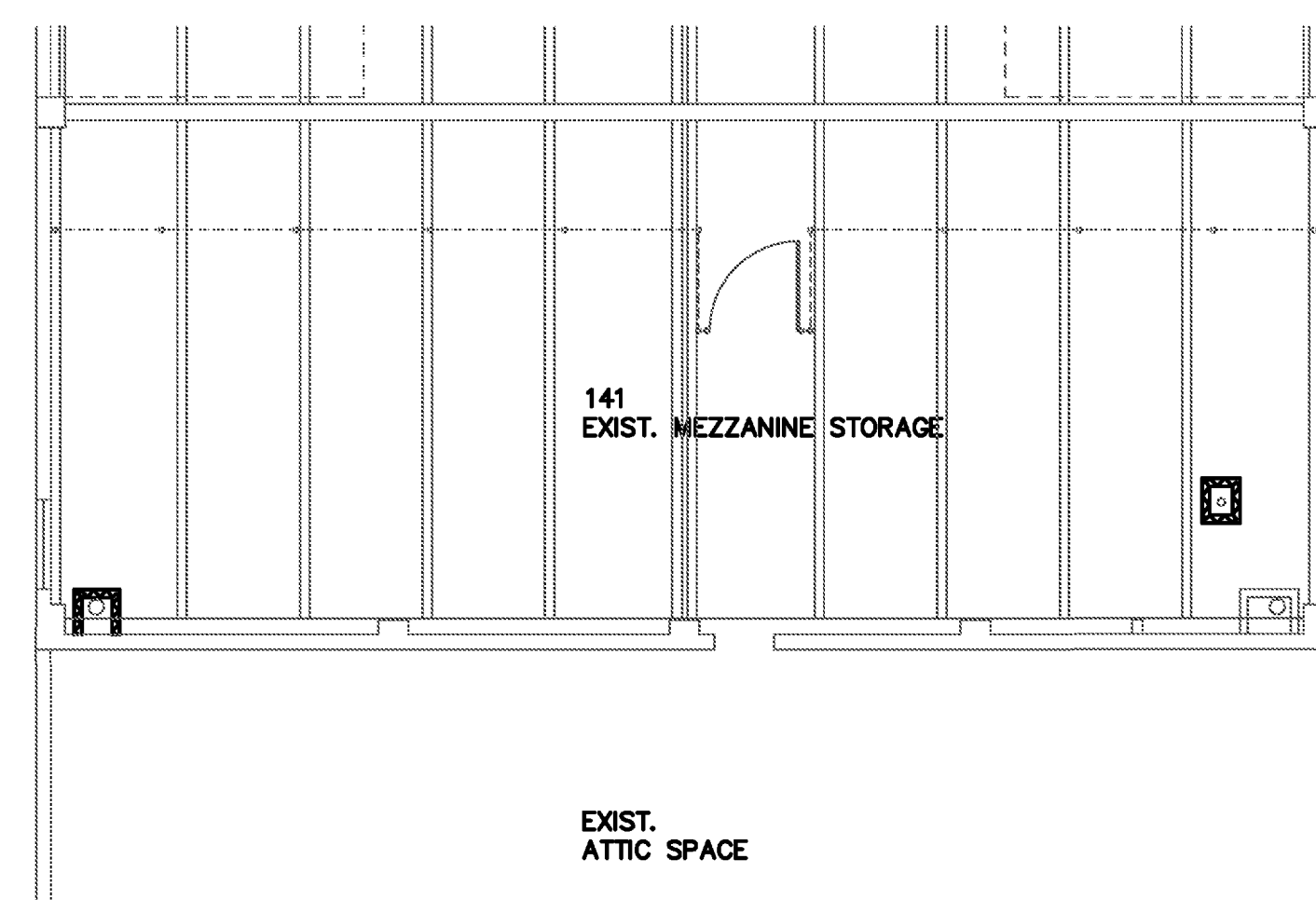
**Stocks
Mann** ■■■
Architects, PLLC
401 W. CAPITOL, SUITE 402
LITTLE ROCK, AR 72201
501-370-9207 501-370-9208 (FAX)

CONSULTANTS

DCI, Inc.
Civil Engineer
ROBBINS ENGINEERING
Structural Engineer
TME, LLC.
MEPF Engineer



N
1 FLOOR PLAN - MEZZANINE
1/8" = 1'-0"



N
2 REFLECTED CEILING PLAN - MEZZANINE
1/8" = 1'-0"

GENERAL NOTES

1. DETAILS OF EXISTING CONDITIONS ARE BASED ON ORIGINAL DRAWINGS AND FIELD OBSERVATIONS. FIELD VERIFY ACTUAL CONDITIONS AT TIME OF CONSTRUCTION AND NOTIFY ARCHITECT IF THERE ARE ANY DISCREPANCIES OR CONFLICTS.
2. ALL DIMENSIONS ARE TO FINISH FACE UNLESS NOTED OTHERWISE. DO NOT SCALE DRAWINGS - WRITTEN DIMENSIONS TAKE PRECEDENCE OVER GRAPHIC REPRESENTATIONS. DETAIL DIMENSIONS TAKE PRECEDENCE OVER PLANS AND ELEVATIONS.
3. ALL DIMENSIONS REVISIONS, MODIFICATIONS, AND DISCREPANCIES SHALL BE BROUGHT TO THE ATTENTION OF THE ARCHITECT FOR REVIEW AND CLARIFICATION PRIOR TO THE INSTALLATION OF THE WORK.
4. PROVIDE ALL NECESSARY BLOCKING IN PARTITIONS FOR WALL MOUNTED ITEMS (DOORSTOPS, TOILET ACCESSORIES OWNER FURNISHED ITEMS, MILLWORK, MECHANICAL ELECTRICAL/DATA EQUIP., ETC.)
5. REFER TO CIVIL, STRUCTURAL MECHANICAL, ELECTRICAL AND FIRE PROTECTION PLANS FOR ITEMS BELOW GRADE CONSTRUCTION NOT SHOWN ON ARCHITECTURAL.
6. UNSCHEDULED CLOSETS OR ALCOVES ARE TO RECEIVE THE SAME FINISH AS THE ROOM IN WHICH THEY OCCUR.
7. COORDINATE MOUNTING HEIGHTS OF LIGHTING WITH ARCHITECT PRIOR TO WORK IF HEIGHTS OR LOCATIONS ARE NOT INDICATED.
8. GENERAL CONTRACTOR TO COORDINATE INTERRUPTION OF UTILITY SERVICES WITH CAMP ROBINSON A MINIMUM OF ONE WEEK PRIOR TO WORK ON UTILITIES.
9. REFER TO SHEET G1.2 AND PARTITION SCHEDULE FOR RATED WALLS. ANY PENETRATIONS THROUGH THESE WALLS ARE TO BE FIRE STOPPED PER DETAILS AS INDICATED ON G1.3. ANY PENETRATIONS THROUGH THE EXISTING CONCRETE DECK ARE TO BE FIRE STOPPED PER DETAILS AS INDICATED ON G1.3.

Fire Station Renovation and
Police Station Addition
Building 7200 - Camp Joseph T. Robinson
North Little Rock, Arkansas

REVISIONS

NO.	DATE	DESCRIPTION

ISSUE DATE

JULY 1, 2016

PROJECT NO.

0901U

CONTENTS

MEZZANINE PLANS

SHEET NUMBER

A2.3