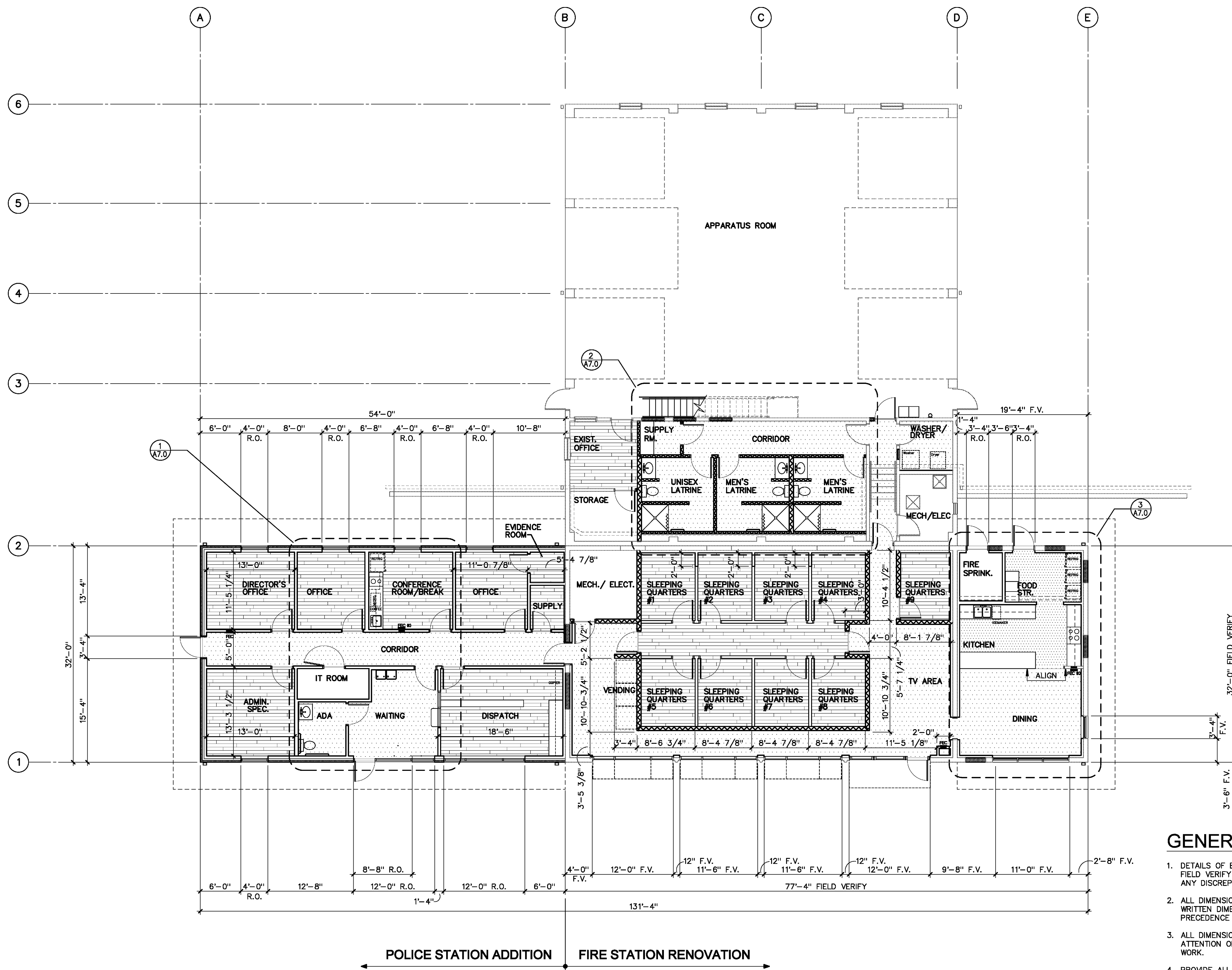


**Fire Station Renovation and
Police Station Addition**
Building 7200 - Camp Joseph T. Robinson
North Little Rock, Arkansas



1 DIMENSION FLOOR PLAN
1/8" = 1'-0"

GENERAL NOTES

1. DETAILS OF EXISTING CONDITIONS ARE BASED ON ORIGINAL DRAWINGS AND FIELD OBSERVATIONS. FIELD VERIFY ACTUAL CONDITIONS AT TIME OF CONSTRUCTION AND NOTIFY ARCHITECT IF THERE ARE ANY DISCREPANCIES OR CONFLICTS.
2. ALL DIMENSIONS ARE TO FINISH FACE UNLESS NOTED OTHERWISE. DO NOT SCALE DRAWINGS - WRITTEN DIMENSIONS TAKE PRECEDENCE OVER GRAPHIC REPRESENTATIONS. DETAIL DIMENSIONS TAKE PRECEDENCE OVER PLANS AND ELEVATIONS.
3. ALL DIMENSIONS REVISIONS, MODIFICATIONS, AND DISCREPANCIES SHALL BE BROUGHT TO THE ATTENTION OF THE ARCHITECT FOR REVIEW AND CLARIFICATION PRIOR TO THE INSTALLATION OF THE WORK.
4. PROVIDE ALL NECESSARY BLOCKING IN PARTITIONS FOR WALL MOUNTED ITEMS (DOORSTOPS, TOILET ACCESSORIES OWNER FURNISHED ITEMS, MILLWORK, MECHANICAL ELECTRICAL/DATA EQUIP., ETC.).
5. REFER TO CIVIL, STRUCTURAL MECHANICAL, ELECTRICAL AND FIRE PROTECTION PLANS FOR ITEMS BELOW GRADE CONSTRUCTION NOT SHOWN ON ARCHITECTURAL.
6. UNSCHEDULED CLOSETS OR ALCOVES ARE TO RECEIVE THE SAME FINISH AS THE ROOM IN WHICH THEY OCCUR.
7. COORDINATE MOUNTING HEIGHTS OF LIGHTING WITH ARCHITECT PRIOR TO WORK IF HEIGHTS OR LOCATIONS ARE NOT INDICATED.
8. GENERAL CONTRACTOR TO COORDINATE INTERRUPTION OF UTILITY SERVICES WITH CAMP ROBINSON A MINIMUM OF ONE WEEK PRIOR TO WORK ON UTILITIES.
9. REFER TO SHEET G1.2 AND PARTITION SCHEDULE FOR RATED WALLS. ANY PENETRATIONS THROUGH THESE WALLS ARE TO BE FIRE STOPPED PER DETAILS AS INDICATED ON G1.3. ANY PENETRATIONS THROUGH THE EXISTING CONCRETE DECK ARE TO BE FIRE STOPPED PER DETAILS AS INDICATED ON

REVISIONS

ISSUE DATE
JULY 1, 2016

PROJECT NO.
0901U

CONTENTS
DIMENSION FLOOR PLAN

SHEET NUMBER

A2.1