

**Fire Station Renovation and
Police Station Addition**
Building 7200 - Camp Joseph T. Robinson
North Little Rock, Arkansas

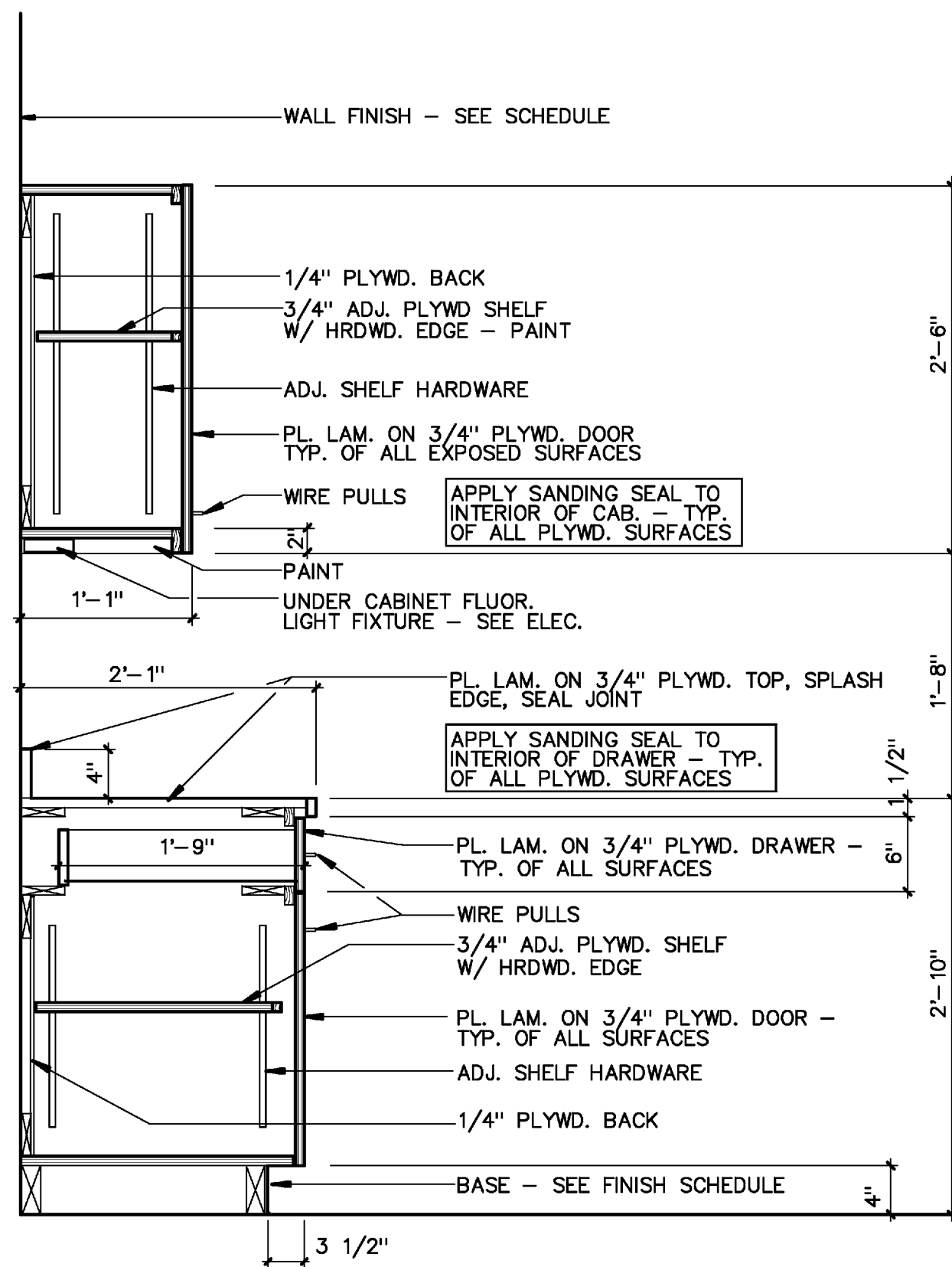
REVISIONS

ISSUE DATE
JULY 1, 2016
PROJECT NO.
0801U

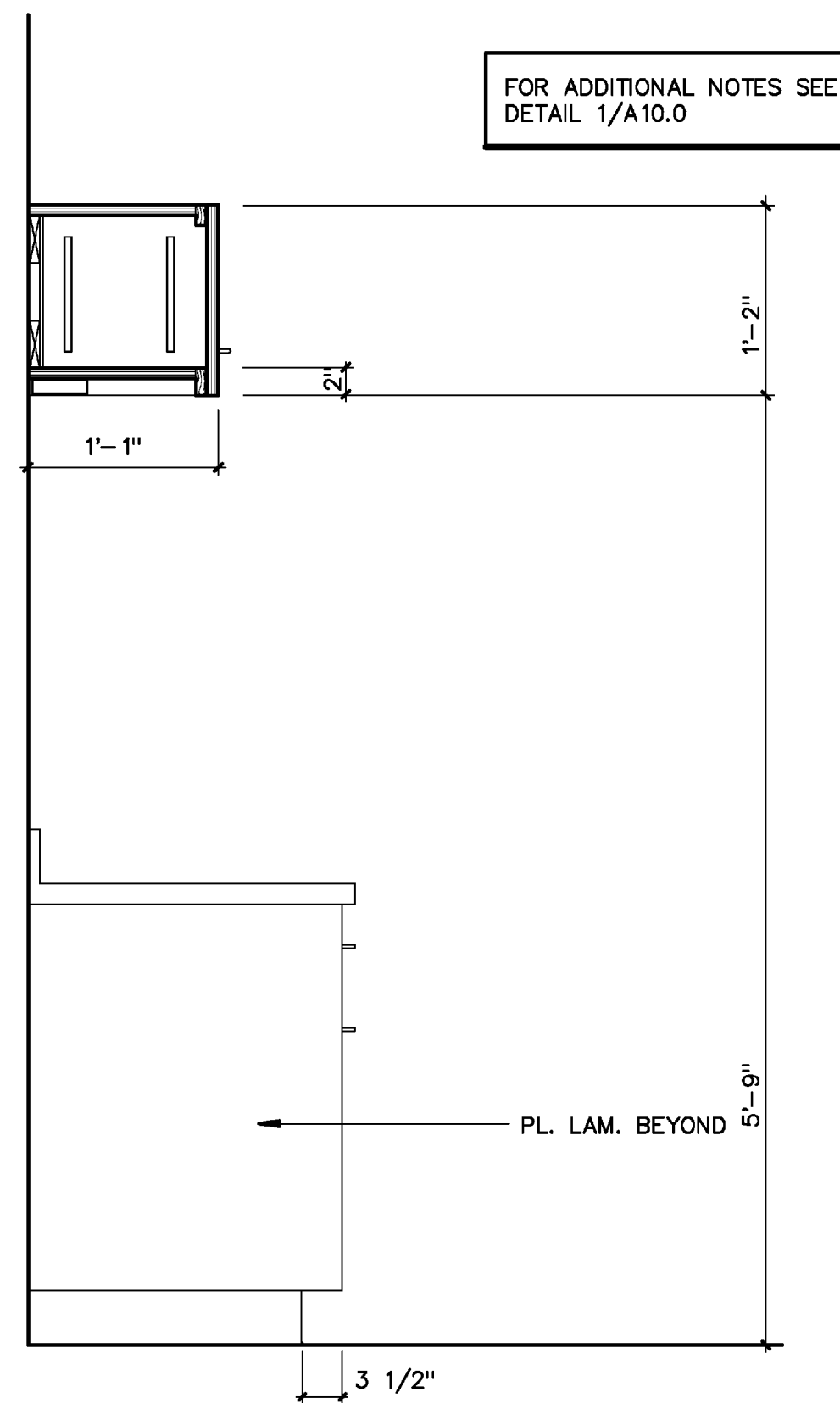
CONTENTS
MILLWORK SECTIONS

SHEET NUMBER

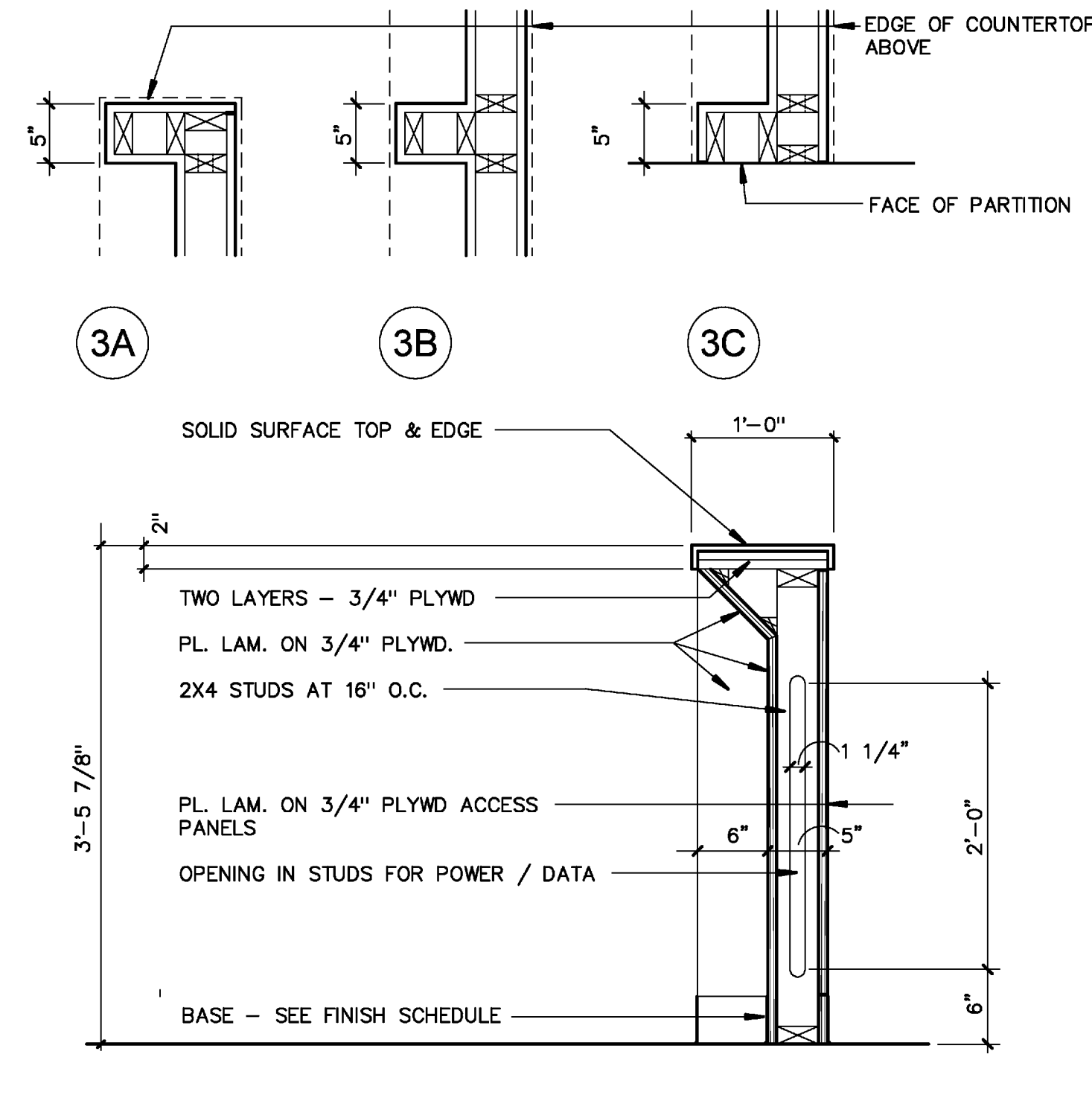
A10.0



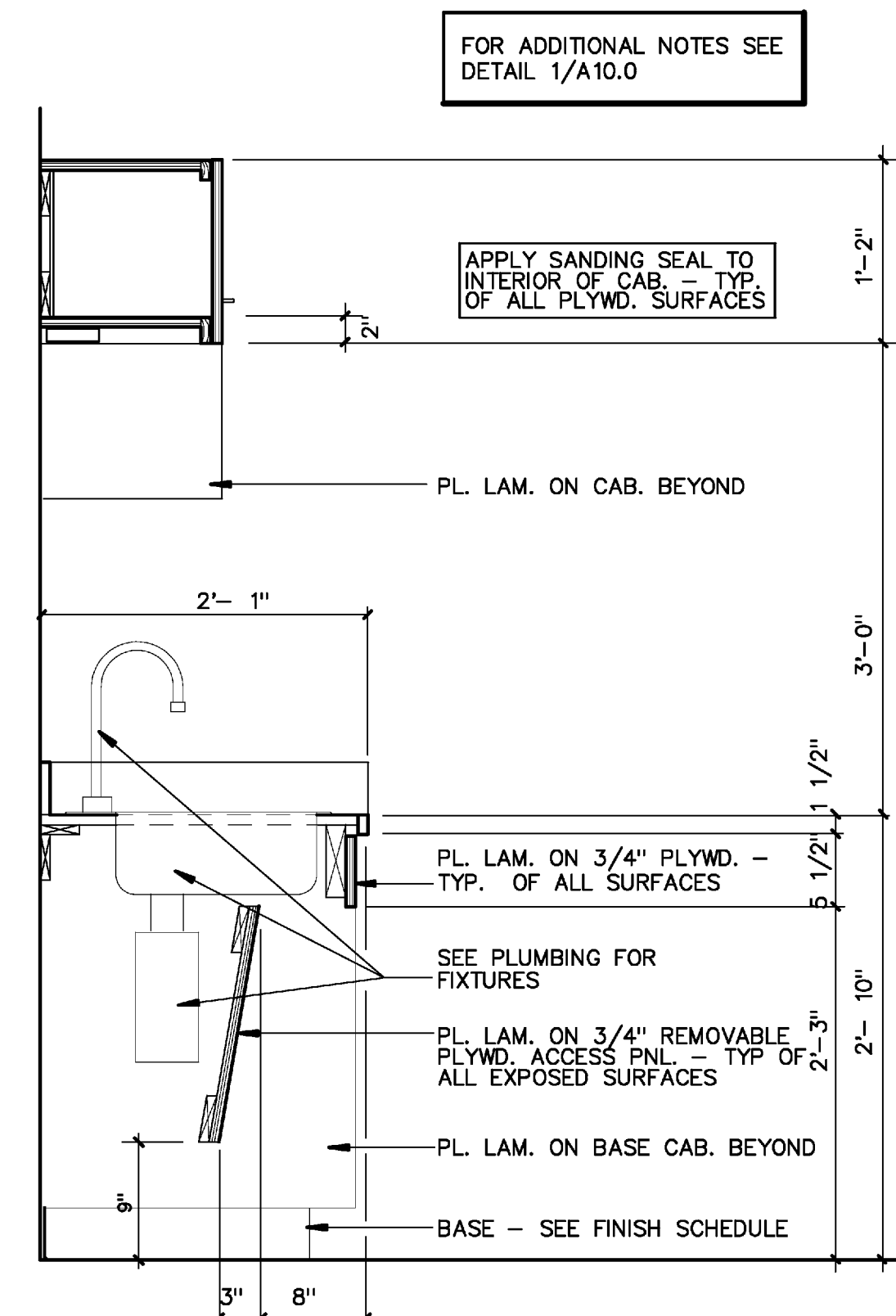
1 TYP. BASE/CAB. SEC.
1" = 1'-0"



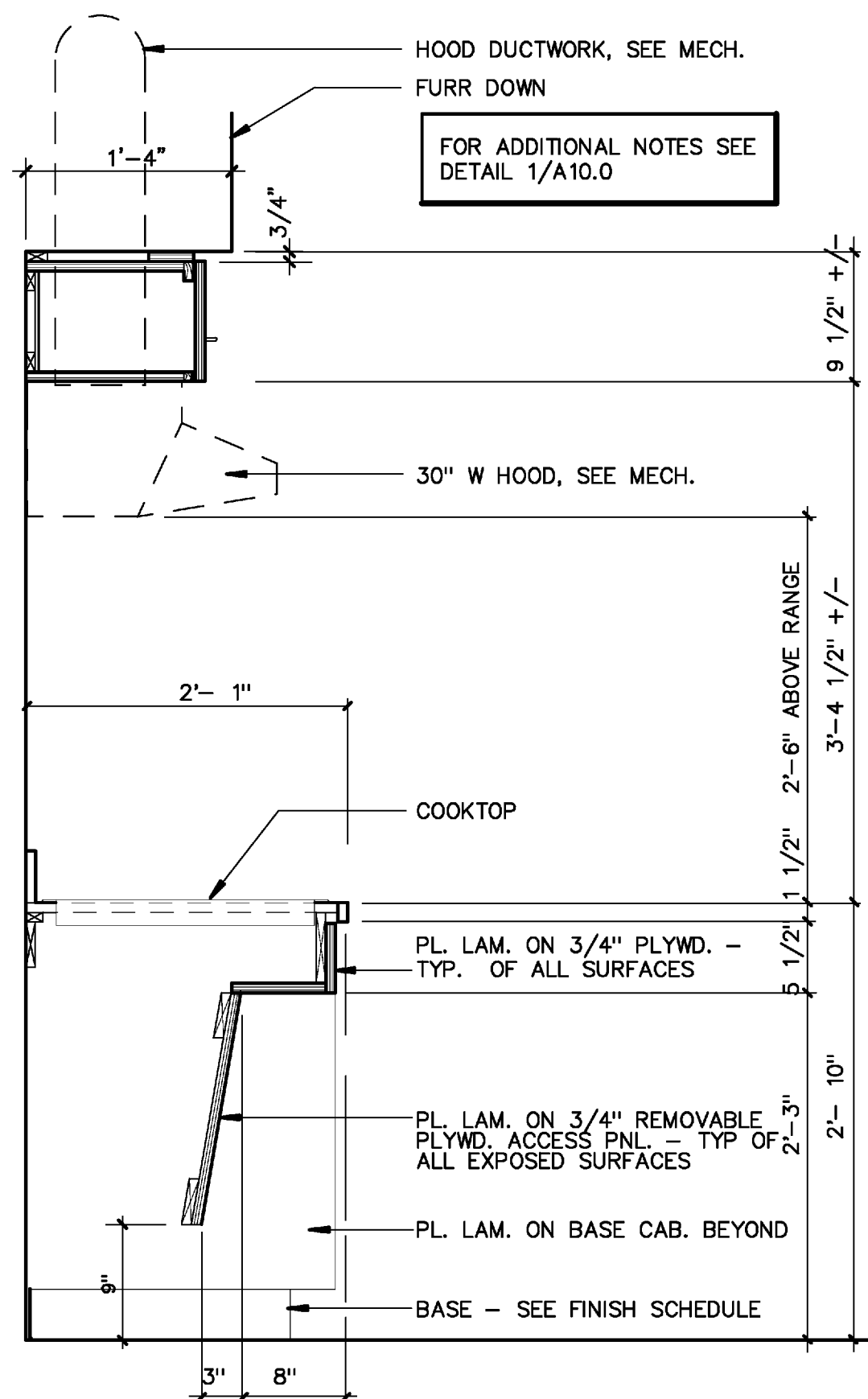
2 CABINET SEC.
1" = 1'-0"



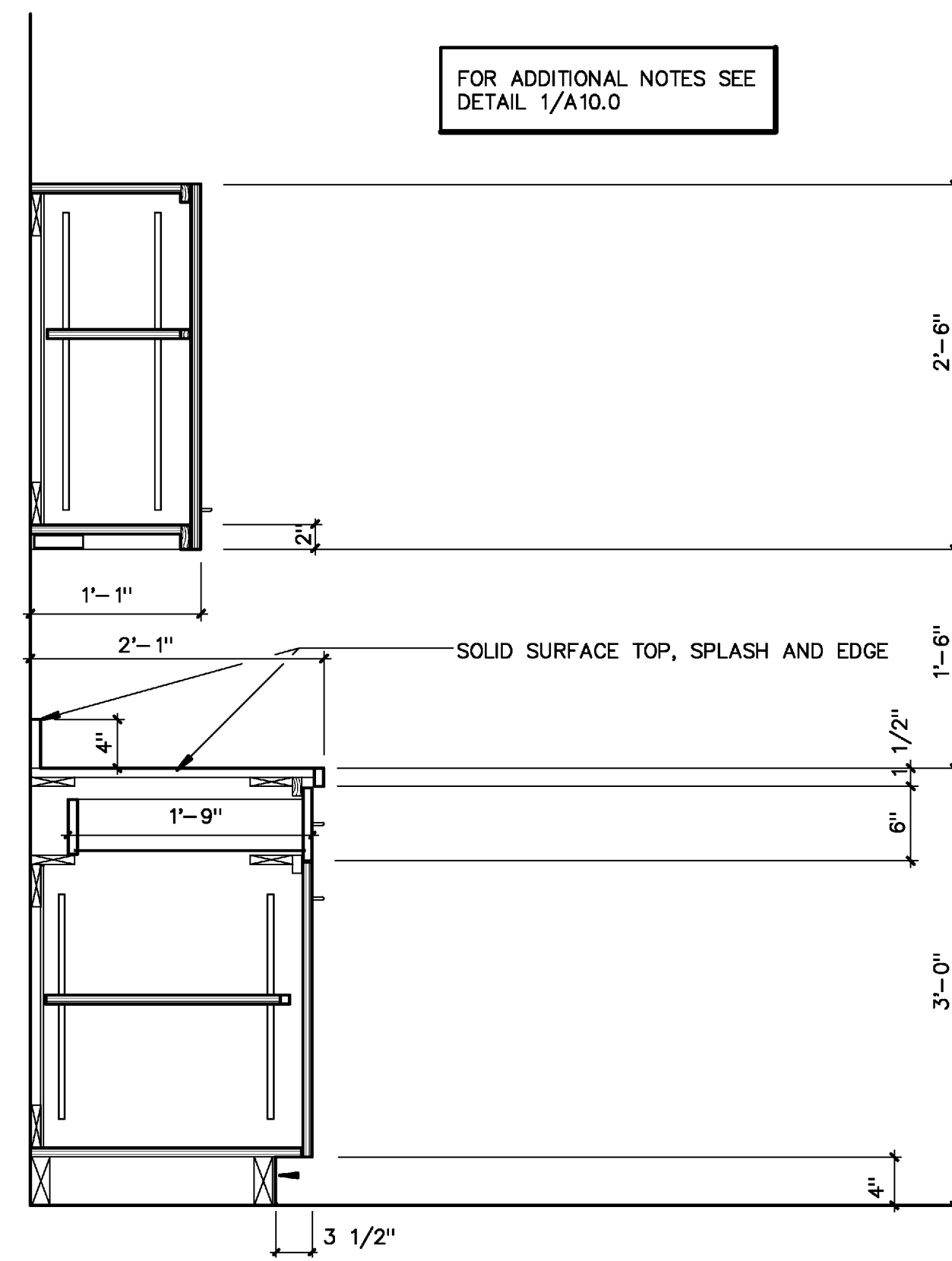
3 COUNTER @ DISPATCH
1" = 1'-0"



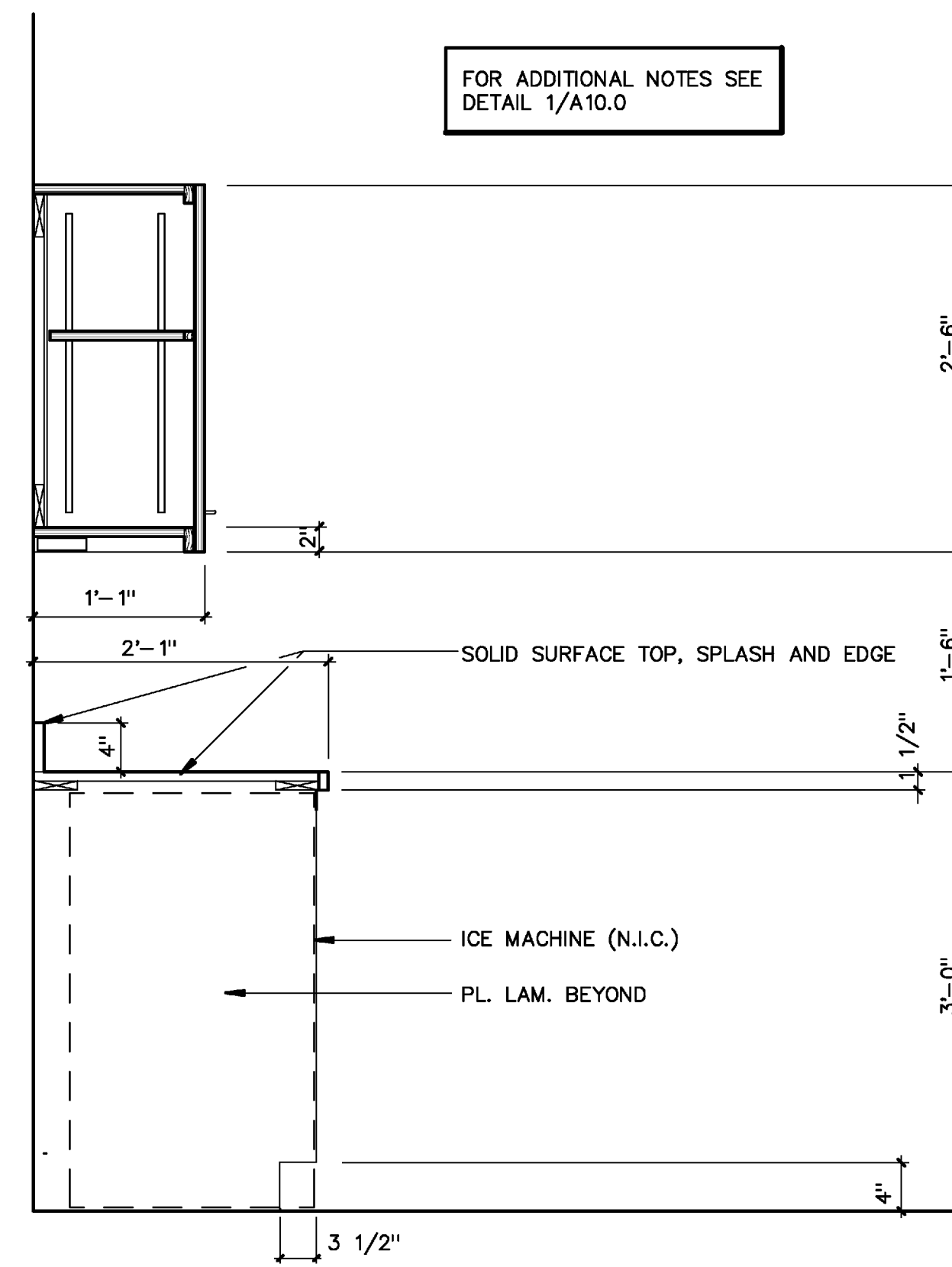
4 BASE/CAB. SEC. @ SINK
1" = 1'-0"



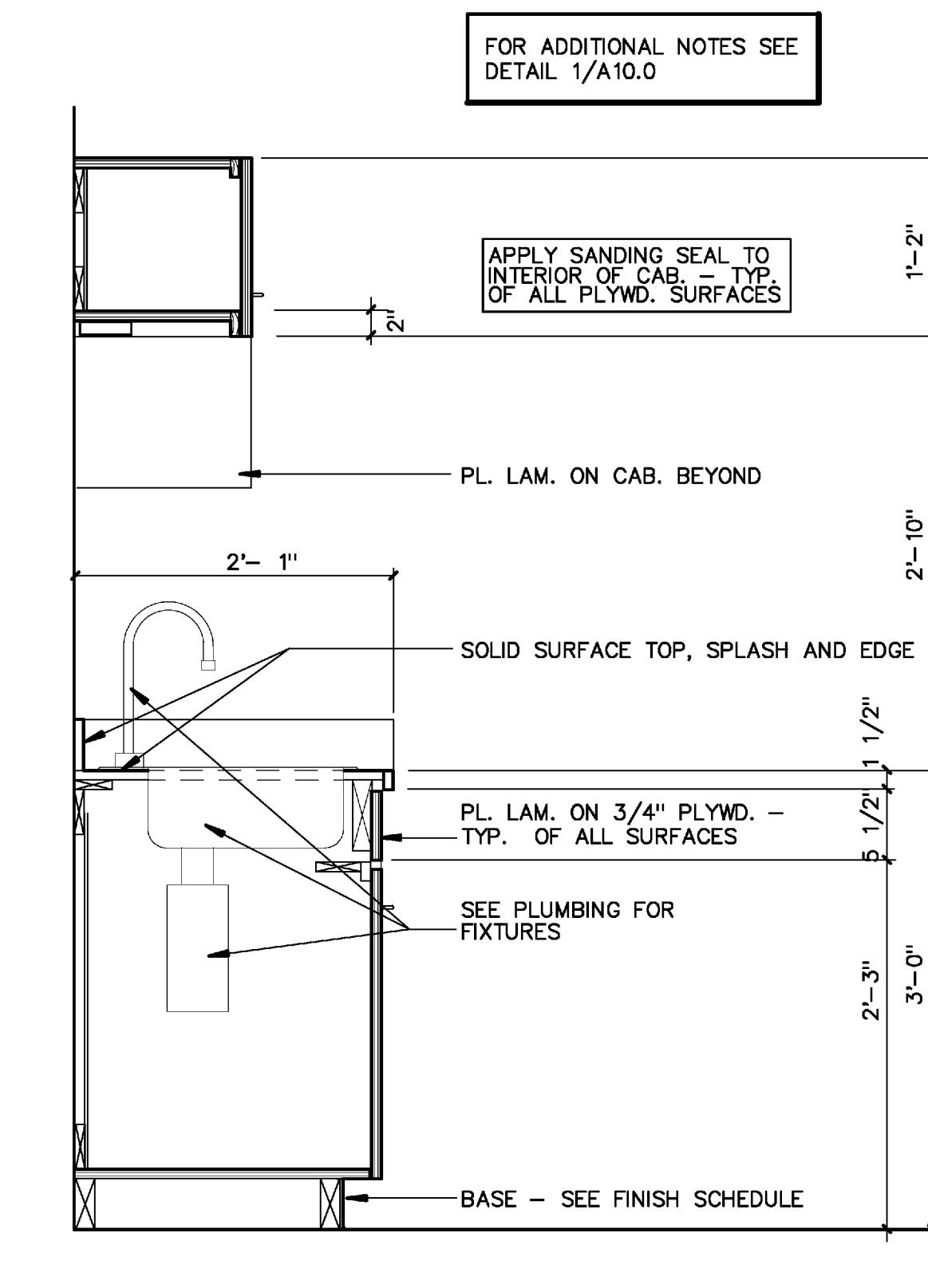
5 BASE CAB. SEC. @ COOKTOP
1" = 1'-0"



6 TYP. BASE/CAB. SEC.
1" = 1'-0"



7 TYP. BASE/CAB. SEC. @ ICEMAKER
1" = 1'-0"



8 BASE/CAB. SEC. @ SINK
1" = 1'-0"

NOTE: PROVIDE CLEAR SEALANT AT THE JOINT BETWEEN THE COUNTERTOP AND SPLASH, TYPICAL ALL COUNTERTOP SURFACES